



Western Washington University  
**Western CEDAR**

---

Salish Sea Ecosystem Conference

2014 Salish Sea Ecosystem Conference  
(Seattle, Wash.)

---

May 2nd, 1:30 PM - 3:00 PM

## **Deep Sea Incident: Oil Spill Response Capacity Enhancement using Local Volunteers**

Barbara Bennett

*WSU Island Co Beach Watchers, barbara.bennett@wsu.edu*

Eric Brooks

*Island County (Wash.) Emergency Management*

Richard Walker

*Washington (State). Department of Ecology*

Follow this and additional works at: <https://cedar.wwu.edu/ssec>



Part of the [Terrestrial and Aquatic Ecology Commons](#)

---

Bennett, Barbara; Brooks, Eric; and Walker, Richard, "Deep Sea Incident: Oil Spill Response Capacity Enhancement using Local Volunteers" (2014). *Salish Sea Ecosystem Conference*. 109.  
<https://cedar.wwu.edu/ssec/2014ssec/Day3/109>

This Event is brought to you for free and open access by the Conferences and Events at Western CEDAR. It has been accepted for inclusion in Salish Sea Ecosystem Conference by an authorized administrator of Western CEDAR. For more information, please contact [westerncedar@wwu.edu](mailto:westerncedar@wwu.edu).

**Barbara L. Bennett, MMA**  
**Salish Sea Conference 5/2/14**

# Enhancing Oil Spill Response Capacity using Local Volunteers



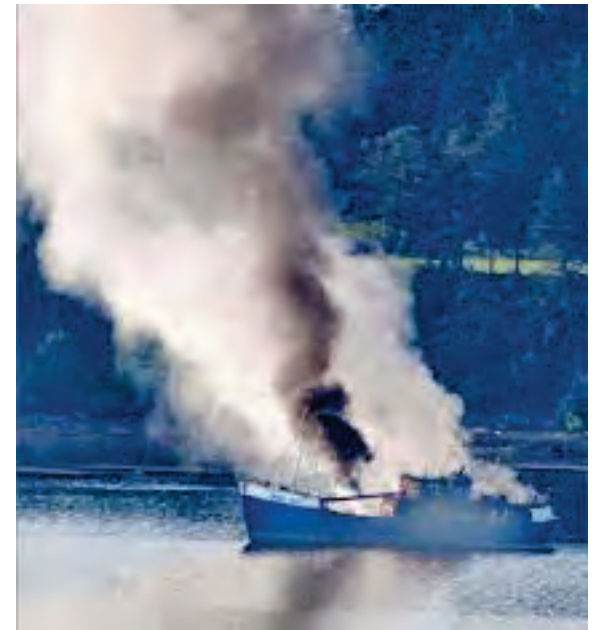
# Getting the right people in the right place at the right time

Creativity  
Collaboration  
Focus on Solutions



# A Case Example

- ◆ Winter 2011  
**DV Deep Sea was anchored in Penn Cove, Whidbey Island**
- ◆ May 12, 2012 - May 14, 2012  
**Deep Sea caught fire and sank**
- ◆ **An incident response team was assembled**
  - ◆ WA DOE Team Lead
  - ◆ WA DFW
  - ◆ US Coast Guard
  - ◆ Island County Emergency Response Staff
- ◆ **The decision was made to refloat the vessel**



Seattle Times Photo

# Incident Response Considerations

- ◆ **Assess the shoreline** and nearshore during retrieval
- ◆ **Use resources efficiently**
- ◆ **Maximize effectiveness**
- ◆ **Foster positive community outreach**
- ◆ ***Volunteers might assist with these considerations based on prior positive experience (with WSU Beach Watchers)***

# Considerations

- ◆ **Situation developed rapidly**
  - ◆ Required capable, mature assistance
  - ◆ Able to respond within hours
- ◆ **Situation was dynamic and had to be managed**
  - ◆ Training re: FEMA Incident Command System required
- ◆ **Situation was hazardous**
  - ◆ Training re: hazardous materials required

# Volunteer Capacity

- ◆ An existing pool of local residents already trained in nearshore biota and experienced in field protocols
- ◆ Staff able to select capable, mature Individuals to participate
- ◆ Many with previous hazmat training but none were currently certified
- ◆ ***How could training requirements be accomplished?***



# A Just-in-time Solution

- 🟢 Mobilized a select group of volunteers
- 🟢 Each secured FEMA ICS 100 certification (web-based)
- 🟢 Provided US Coast Guard customized, incident-specific hazmat training
- 🟢 Assigned volunteers in teams under the supervision of fully trained Coast Guard personnel







## Teams were deployed to assess the shoreline and nearshore as the Deep Sea was raised

- Sunday, June 3 the Deep Sea was raised
- US Coast Guard personnel were accompanied by teams of volunteers who augmented assessment capacity

# Incident response objectives were supported (advantages)

- Shoreline assessment was enhanced
- Additional resources were mobilized at minimal cost
- Volunteers became informed and enthusiastic and provided accurate **community outreach**



# The mission of WSU Island County Beach Watchers was supported

To maintain and protect a thriving Salish Sea ecosystem through education, community outreach, stewardship, and research.



This situation succeeded in  
getting the right people  
in the right place  
at the right time

Using  
Creativity  
Collaboration  
Focus on Solutions



And... the foundation was laid  
for future collaboration  
if needed again



# Challenges

- ◆ **Liability**
- ◆ **Incident Intensity**
- ◆ **Volunteer skills and knowledge**
- ◆ **Capacity for rapid response**
- ◆ **Others....**

Barbara L Bennett, MMA  
Program Coordinator  
WSU Island County  
Beach Watchers

360.679.7391

Barbara.Bennett@wsu.edu

