



Apr 5th, 10:55 AM - 11:00 AM

Copper accumulation from antifouling paints in five marinas on Puget Sound

William Hobbs

Washington State Dept. of Ecology, United States, whob461@ecy.wa.gov

Melissa McCall

Washington State Dept. of Ecology, United States, melm461@ecy.wa.gov

Jennifer Lanksbury

Washington (State). Department of Fish and Wildlife, jennifer.lanksbury@dfw.wa.gov

Follow this and additional works at: <https://cedar.wvu.edu/ssec>



Part of the [Fresh Water Studies Commons](#), [Marine Biology Commons](#), [Natural Resources and Conservation Commons](#), and the [Terrestrial and Aquatic Ecology Commons](#)

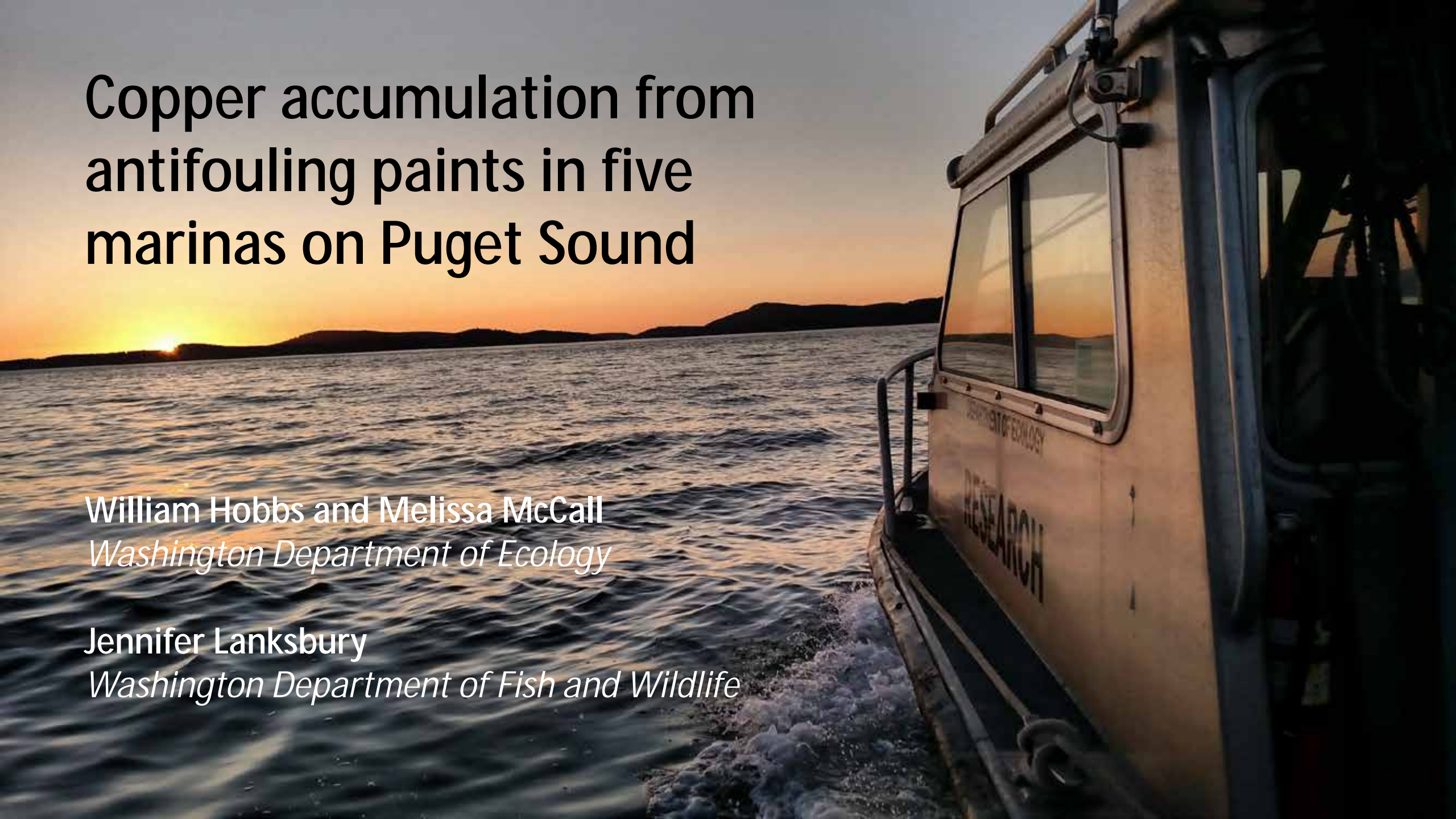
Hobbs, William; McCall, Melissa; and Lanksbury, Jennifer, "Copper accumulation from antifouling paints in five marinas on Puget Sound" (2018). *Salish Sea Ecosystem Conference*. 163.
<https://cedar.wvu.edu/ssec/2018ssec/allsessions/163>

This Event is brought to you for free and open access by the Conferences and Events at Western CEDAR. It has been accepted for inclusion in Salish Sea Ecosystem Conference by an authorized administrator of Western CEDAR. For more information, please contact westerncedar@wvu.edu.

Copper accumulation from antifouling paints in five marinas on Puget Sound

William Hobbs and Melissa McCall
Washington Department of Ecology

Jennifer Lanksbury
Washington Department of Fish and Wildlife



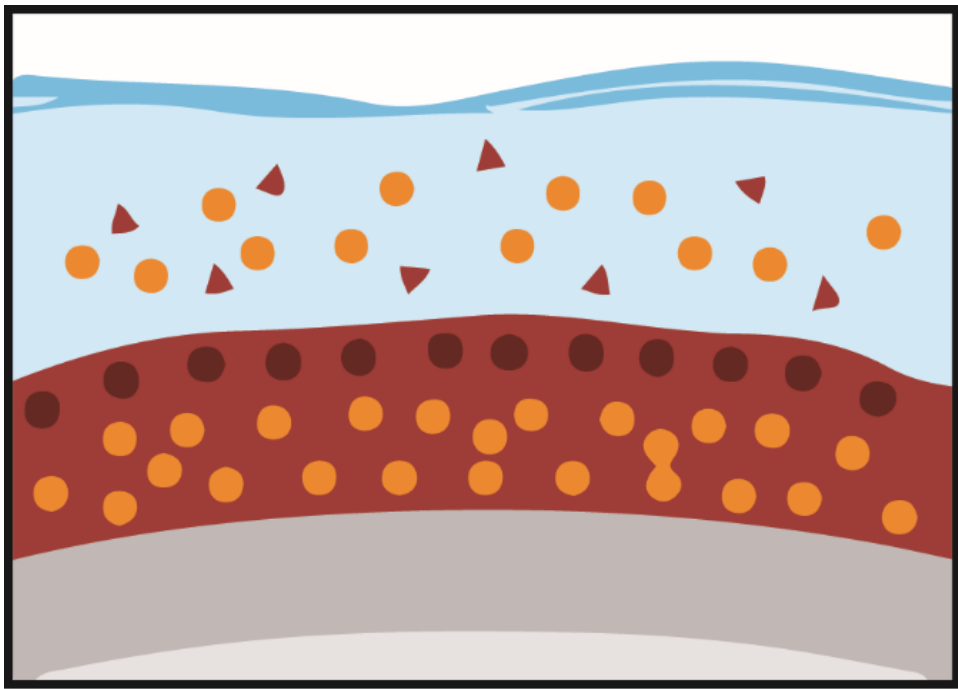
SSB 5436 - H COMM AMD
By Committee on Environment

ADOPTED 04/06/2011

1 Strike everything after the enacting clause and insert the
2 following:

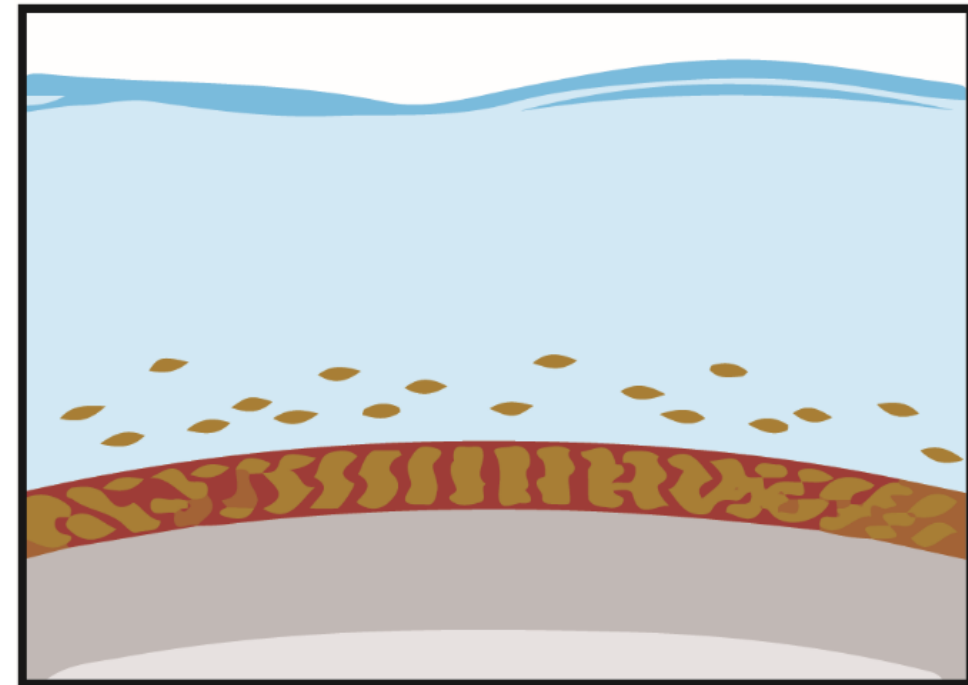
3 "NEW SECTION. **Sec. 1.** The legislature intends to phase out the
4 use of copper-based antifouling paints used on recreational water
5 vessels.

19 (2)(a) By January 1, 2017, the department shall survey the
20 manufacturers of antifouling paints sold or offered for sale in this
21 state to determine the types of antifouling paints that are available
22 in this state. The department shall also study how antifouling paints
23 affect marine organisms and water quality. The department shall report
24 its findings to the legislature, consistent with RCW 43.01.036, by
25 December 31, 2017.

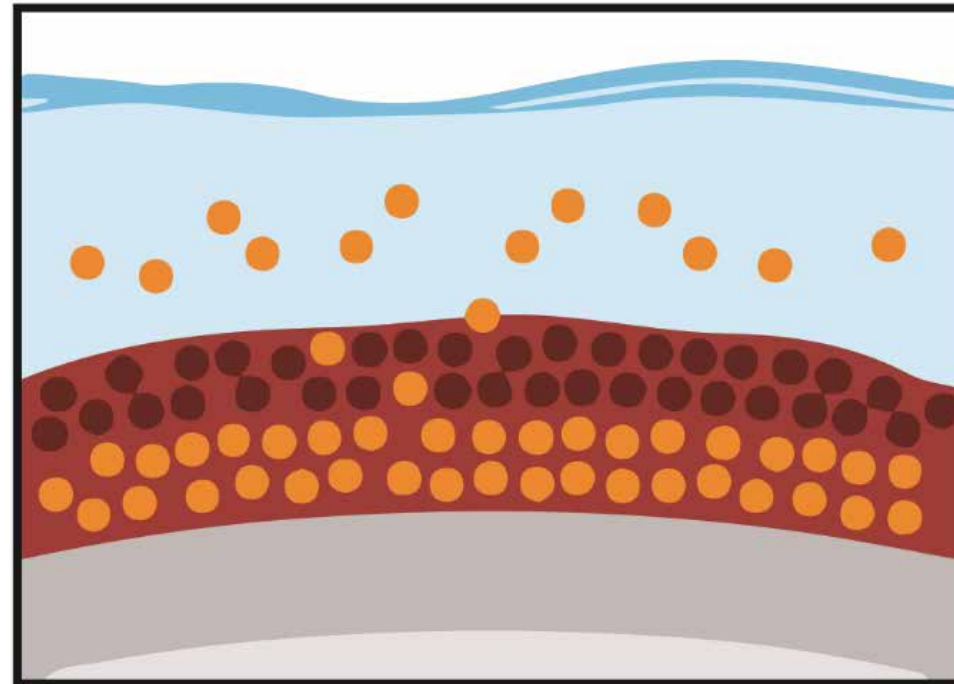


polishing/
ablative

hard



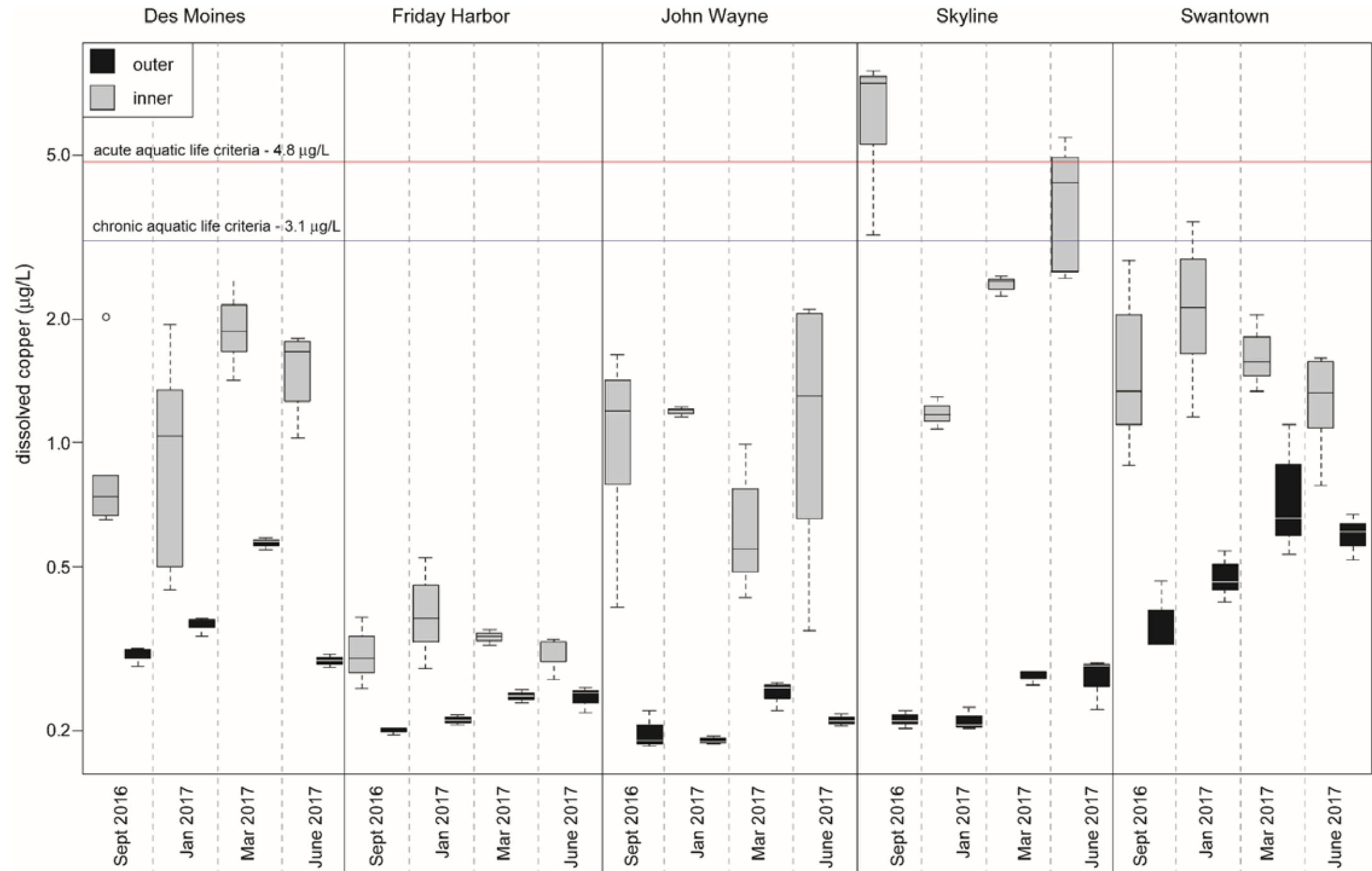
thin film

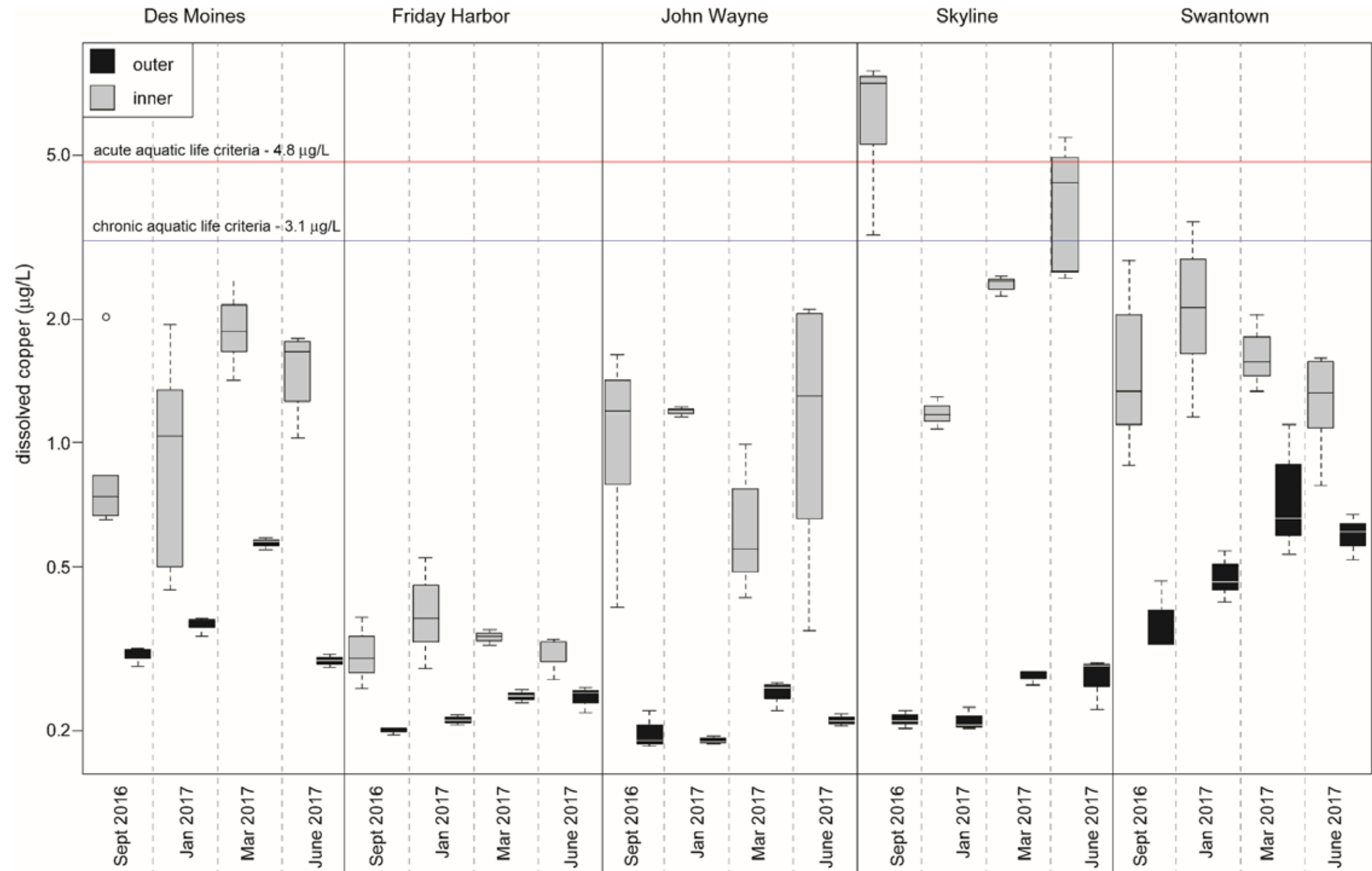


Media	Sep-16	Oct-16	Nov-16	Dec-16	Jan-17	Feb-17	Mar-17	Apr-17	May-17	Jun-17
Water	sample				sample		sample			sample
Sediment Trap	deployed				sample	deployed	sample	deployed		sample
Mussels							deployed			sample
Bottom Sediment										sample
Biofilms							deployed			sample



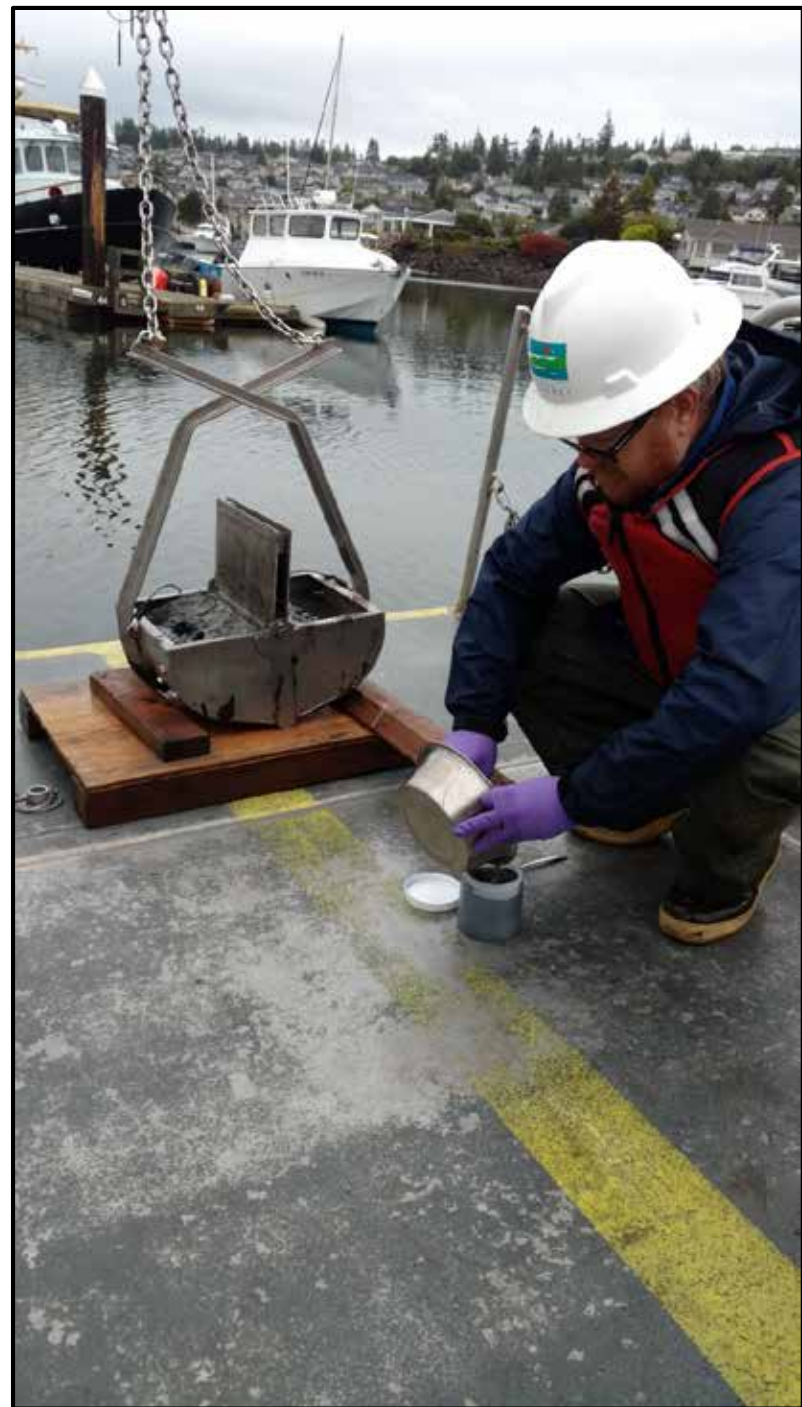

























N Puget Sound  S Puget Sound

Date	FDH	JWM	SLM	DMM	STM
Sept 2016	0.2	0.2	0.21	0.31	0.37
Jan 2017	0.21	0.19	0.21	0.36	0.47
Mar 2017	0.24	0.25	0.27	0.57	0.77
June 2017	0.24	0.21	0.27	0.3	0.6

Dissolved Cu outside marinas (µg/L)

