



Western Washington University
Western CEDAR

Salish Sea Ecosystem Conference

2018 Salish Sea Ecosystem Conference
(Seattle, Wash.)

Apr 6th, 8:30 AM - 8:45 AM

Transboundary cooperation to reduce bacterial pollution in Washington's lower Nooksack Basin

Doug Allen

Washington State Dept. of Ecology, United States, doua461@ecy.wa.gov

Steve Hood

Washington State Dept. of Ecology, United States, shoo461@ecy.wa.gov

Follow this and additional works at: <https://cedar.wwu.edu/ssec>



Part of the [Fresh Water Studies Commons](#), [Marine Biology Commons](#), [Natural Resources and Conservation Commons](#), and the [Terrestrial and Aquatic Ecology Commons](#)

Allen, Doug and Hood, Steve, "Transboundary cooperation to reduce bacterial pollution in Washington's lower Nooksack Basin" (2018). *Salish Sea Ecosystem Conference*. 438.

<https://cedar.wwu.edu/ssec/2018ssec/allsessions/438>

This Event is brought to you for free and open access by the Conferences and Events at Western CEDAR. It has been accepted for inclusion in Salish Sea Ecosystem Conference by an authorized administrator of Western CEDAR. For more information, please contact westerncedar@wwu.edu.



Transboundary Cooperation To Reduce Pollution In Washington's Lower Nooksack Basin

Steve Hood and Doug Allen

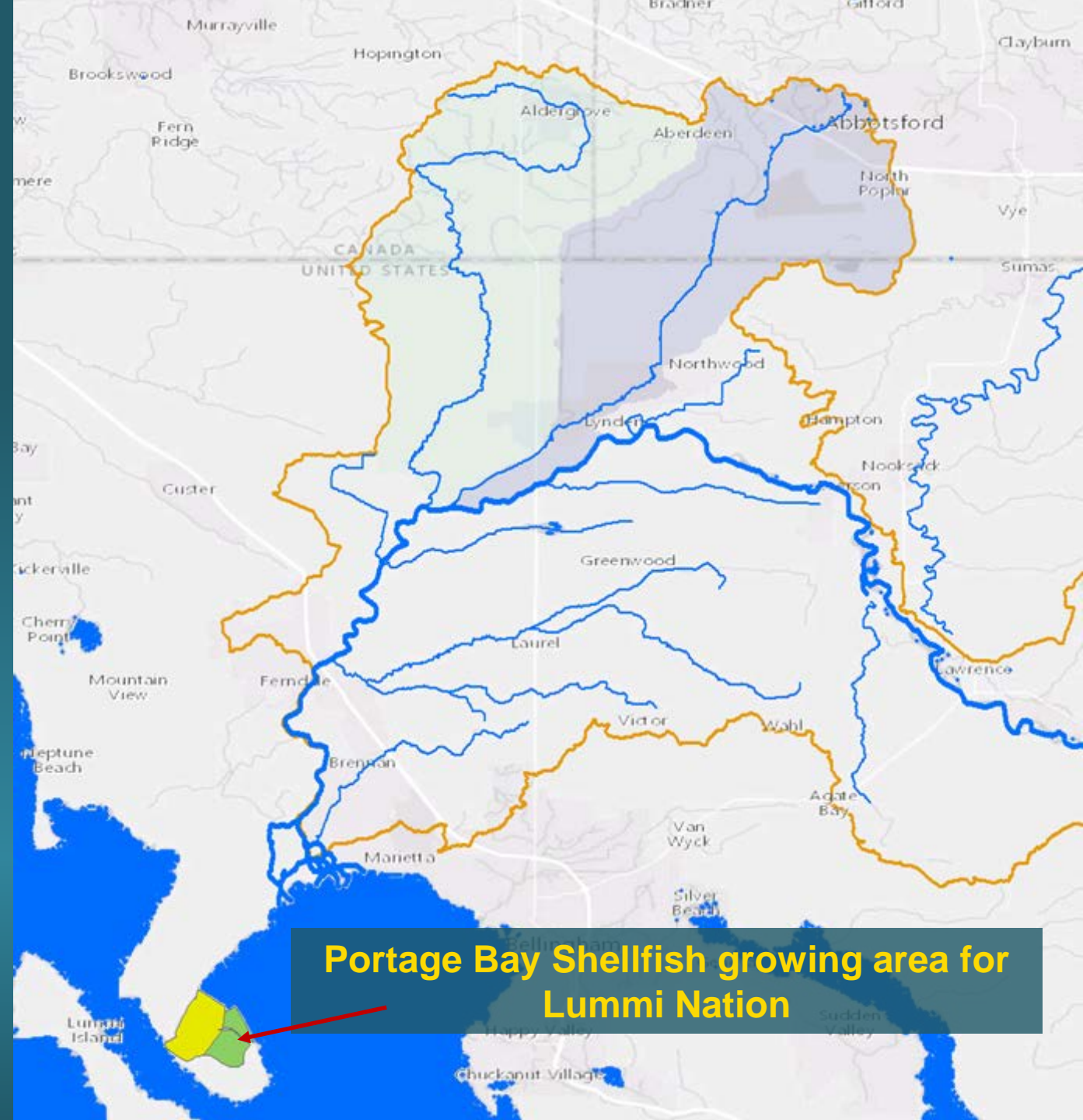
WA Dept. of Ecology

Bellingham Field Office

steve.hood@ecy.wa.gov

doug.allen@ecy.wa.gov

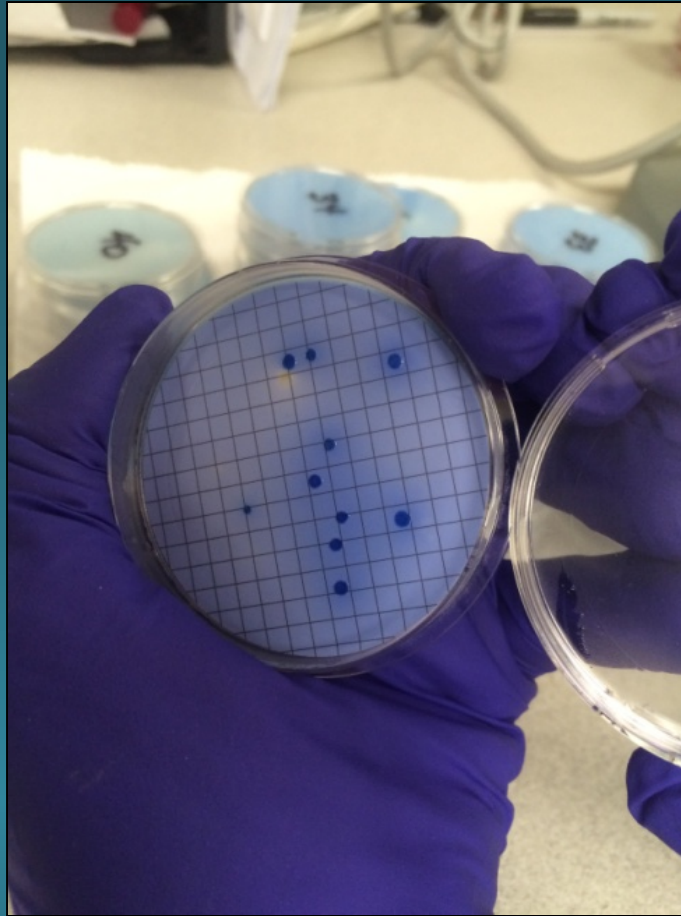
Lower Nooksack River Watershed



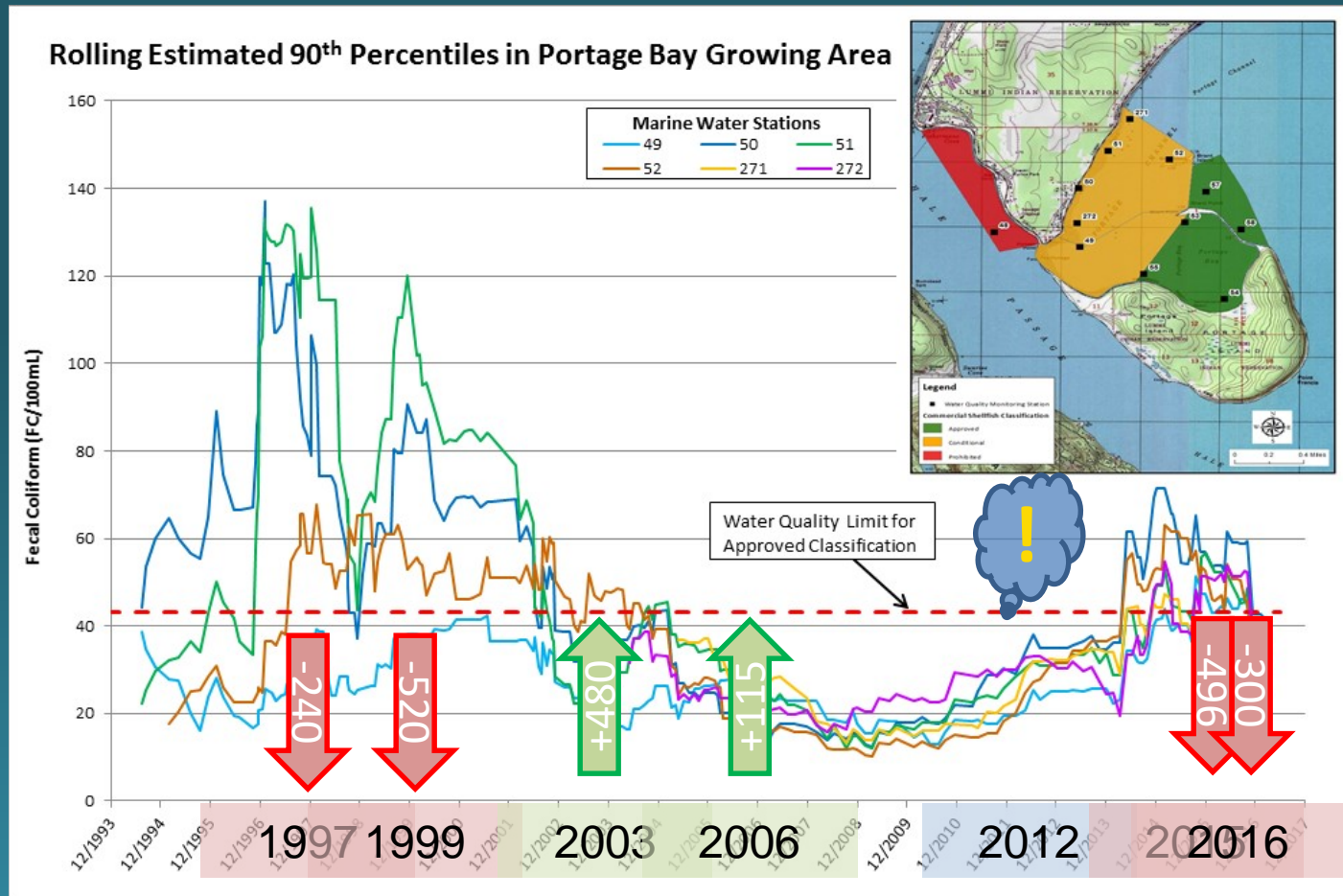
Portage Bay Shellfish growing area for Lummi Nation

Fecal Coliform Bacteria

Indicator of Pathogens

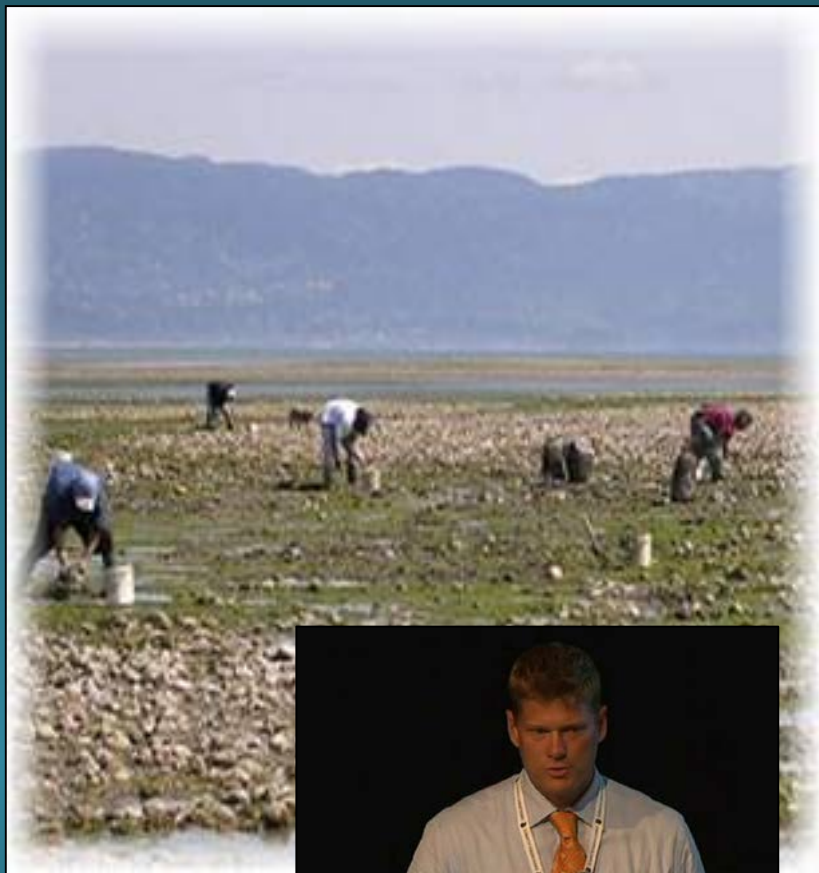


Portage Bay Shellfish Harvest Area



Approximately 800 Acres of shellfish harvest restricted due to poor water quality - April-June & October-December

Whatcom Clean Water Program (WCWP)

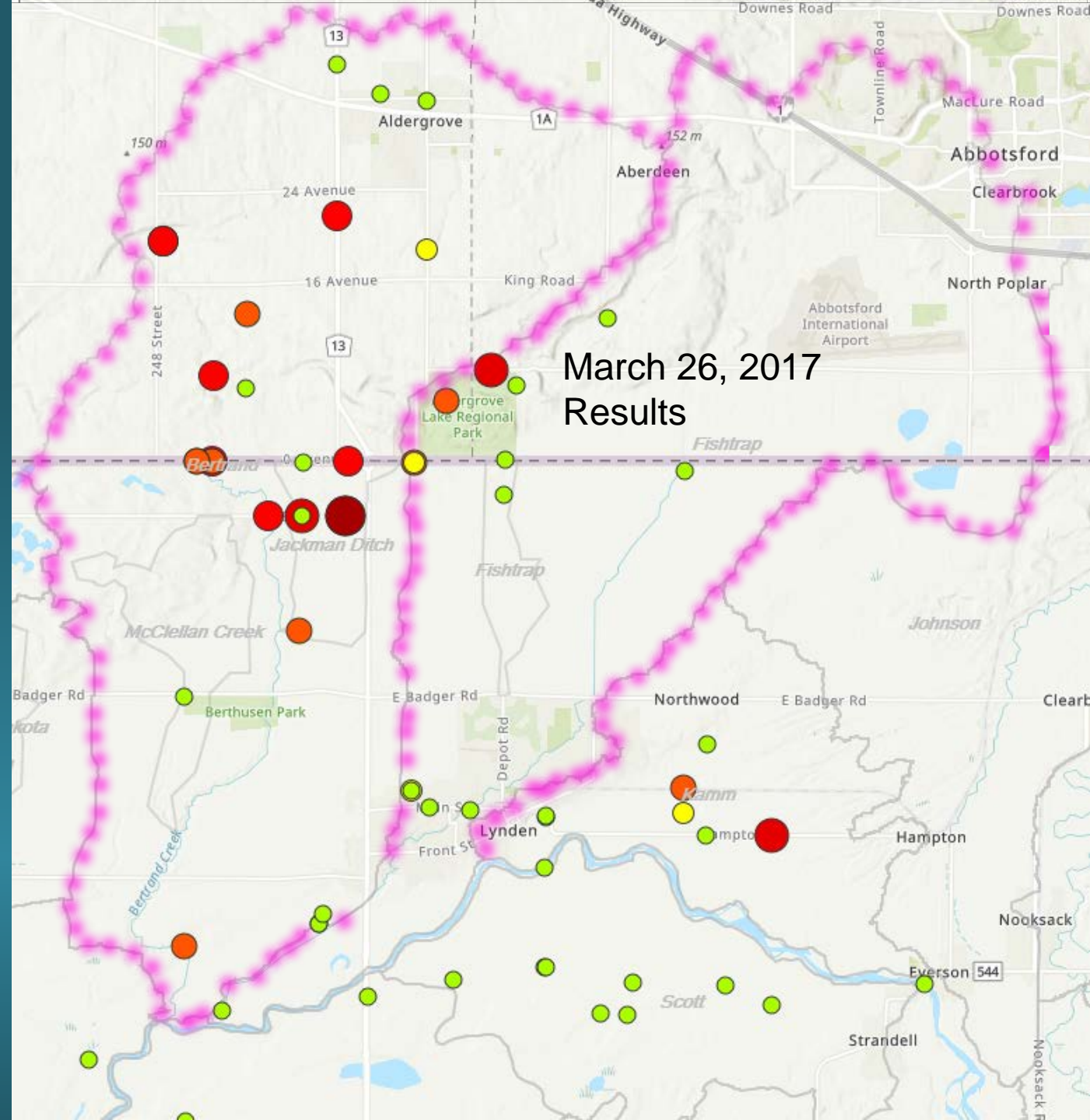


Recent Sample Results

(Fecal Coliform per 100mL)

-  > 5,000 to 1,000,000
-  > 1,500 to 5,000
-  > 500 to 1,500
-  > 200 to 500
-  > 100 to 200
-  0 to 100

All Sample Data



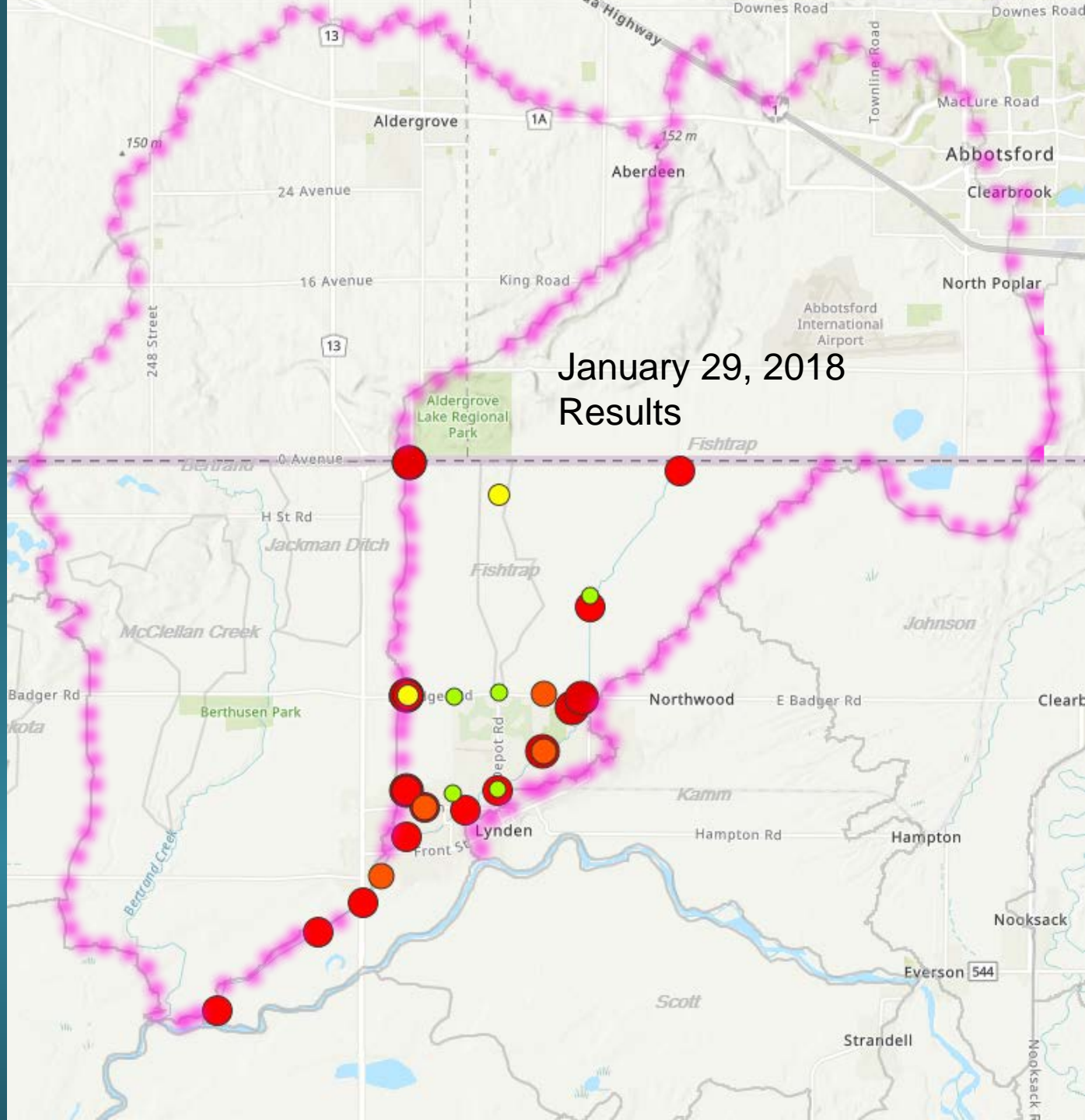
March 26, 2017
Results

Recent Sample Results
 (Fecal Coliform per 100mL)

- > 5,000 to 1,000,000
- > 1,500 to 5,000
- > 500 to 1,500
- > 200 to 500
- > 100 to 200
- 0 to 100

All Sample Data

-



Why Fecal Coliform, why now ?

WHATCOM COUNTY
EXECUTIVE'S OFFICE
County Courthouse
311 Grand Ave. Suite #108
Bellingham, WA 98225



Jack Louws
County Executive

May 3, 2016

Governor Jay Inslee
Office of the Governor
PO Box 40002
Olympia, WA 98504-0002

Dear Governor Inslee:

Letter from Whatcom County Executive

Extensive sampling at our international boundary shows fecal coliform bacteria contributions from Canada in the Bertrand and Fishtrap Creek watersheds. This is impacting water quality in

extensive sampling at our international boundary shows fecal coliform bacteria contributions from Canada in the Bertrand and Fishtrap Creek watersheds. This is impacting water quality in the Nooksack River and thus, shellfish beds in Portage Bay. Bertrand and Fishtrap Creeks are the two largest creeks discharging into the lower Nooksack River and Portage Bay and half of these watersheds lie in Canada. As you know, nearly 600 acres of Lummi tribal shellfish beds in

currently being considered for downgrade. Clearly, there are also sources in the U.S. portion of these watersheds that still need to be addressed; **however, at times, bacterial pollution coming across the border is at levels that would make it difficult to reopen the Portage Bay shellfish harvest areas regardless of our efforts to deal with U.S. sources.**

I thank you for continuing to support our efforts to improve water quality in Whatcom County and recover shellfish harvest in Portage Bay and our other shellfish areas.

Whatcom Clean Water Program partners have already made contacts with the B.C. Ministry of Environment and although Ministry staff is sympathetic to the issue, there was a limit on what

enclosure; cc's list on attached sheet

they could do to accommodate our concerns. The State of Washington has a cooperative agreement with the Province of British Columbia, and **we urge you to invoke its provisions to establish a transboundary task force to address the bacterial pollution in surface water as has been done in the past over the high nitrates in our shared groundwater aquifer.**

Original Environmental Cooperation Council (ECC) Structure

BC Premier

WA Governor

Deputy Minister of Environment

Director, Dept. of Ecology

ECC

High Priority Issues -> Task Forces

Abbotsford-Sumas Aquifer Nitrates

Georgia Straight/Puget Sound

Nooksack River Flooding

Columbia River Watershed

Air Quality



Environmental Cooperation Council

WA-BC Nooksack River WQ Task Group

Principles

- BC Ministry Environment
- WA Department of Ecology

National Observers

- Environment and Climate Change, Canada
- US Environmental Protection Agency

State & Provincial Partners

- WA Dept. of Agriculture
- WA Dept. of Health
- WA Governor's Office
- BC Ministry of Agriculture



Common Understanding Issues



Common Understanding of Legislative frame work and BMPs





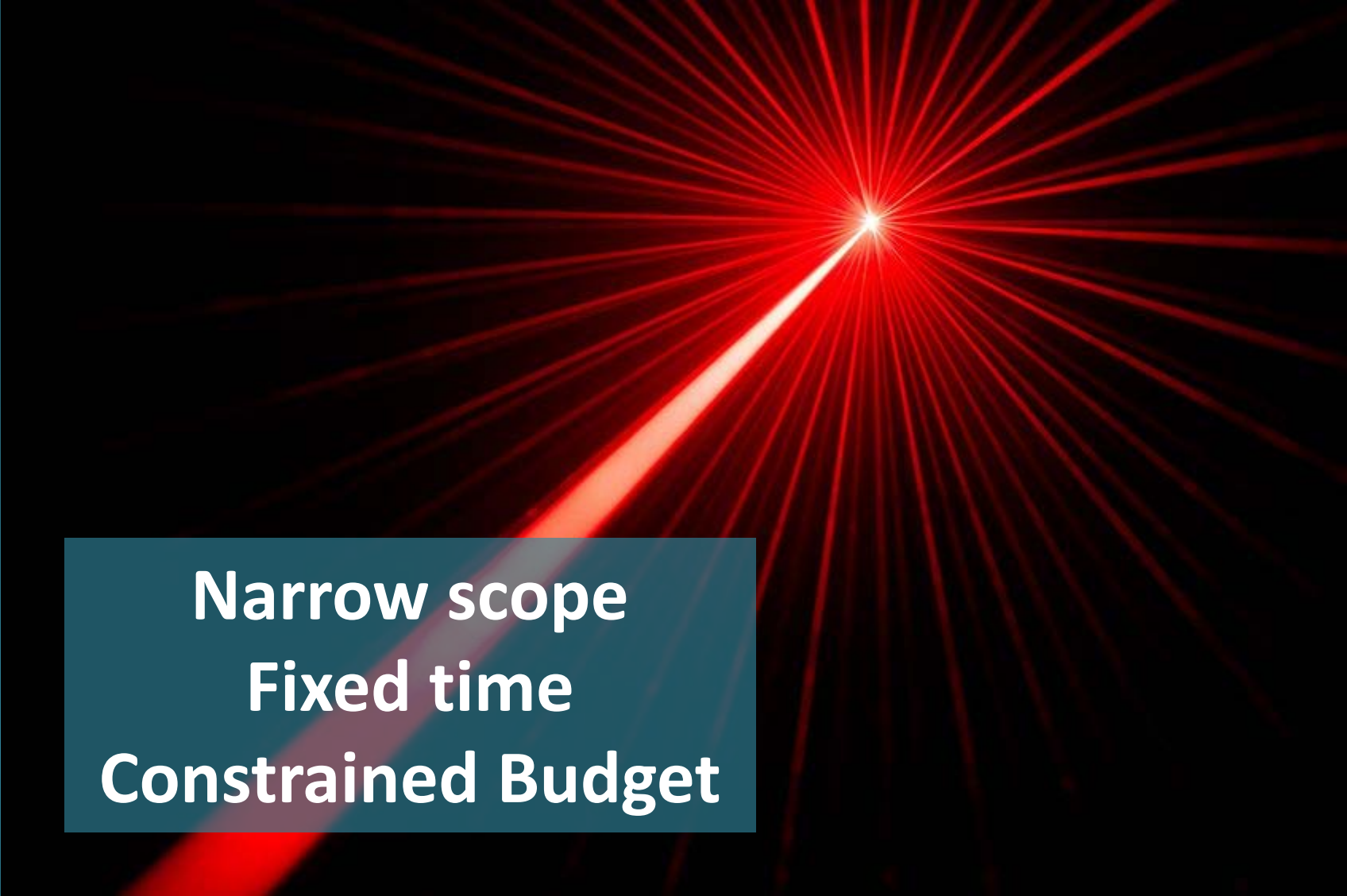
Assess Gaps Recommend Action



Courtesy of
www.cornwalls.co.uk

Demonstrate Cooperation



A large, vibrant red laser light burst emanating from a central point in the upper right quadrant of a black rectangular area. The light rays fan out in all directions, creating a starburst effect. A prominent, thicker red beam extends from the center towards the bottom left corner of the black area.

Narrow scope
Fixed time
Constrained Budget

**Steve Hood
Bellingham
Field Office
360- 255-4396**

Thank you!

**Department of Ecology
www.ecy.wa.gov**