



Western Washington University
Western CEDAR

Salish Sea Ecosystem Conference

2018 Salish Sea Ecosystem Conference
(Seattle, Wash.)

Apr 6th, 8:45 AM - 9:00 AM

Prompt data sharing promotes engagement and generates change

Michael Isensee

Washington State Dept. of Agriculture, United States, misensee@agr.wa.gov

Follow this and additional works at: <https://cedar.wwu.edu/ssec>



Part of the [Fresh Water Studies Commons](#), [Marine Biology Commons](#), [Natural Resources and Conservation Commons](#), and the [Terrestrial and Aquatic Ecology Commons](#)

Isensee, Michael, "Prompt data sharing promotes engagement and generates change" (2018). *Salish Sea Ecosystem Conference*. 450.

<https://cedar.wwu.edu/ssec/2018ssec/allsessions/450>

This Event is brought to you for free and open access by the Conferences and Events at Western CEDAR. It has been accepted for inclusion in Salish Sea Ecosystem Conference by an authorized administrator of Western CEDAR. For more information, please contact westerncedar@wwu.edu.

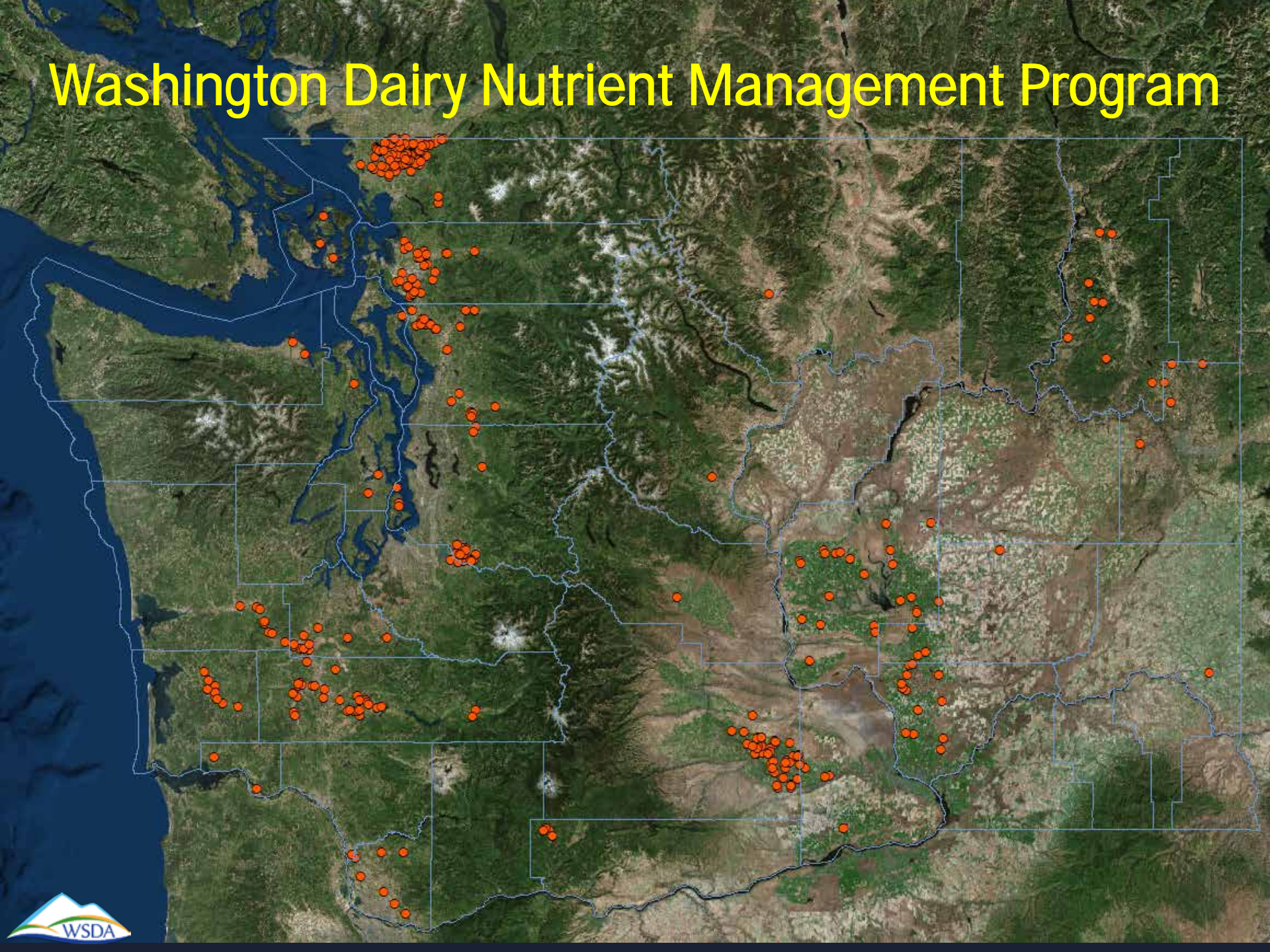
Prompt data sharing promotes engagement and generates change

Salish Sea Ecosystem Conference
April 6, 2018



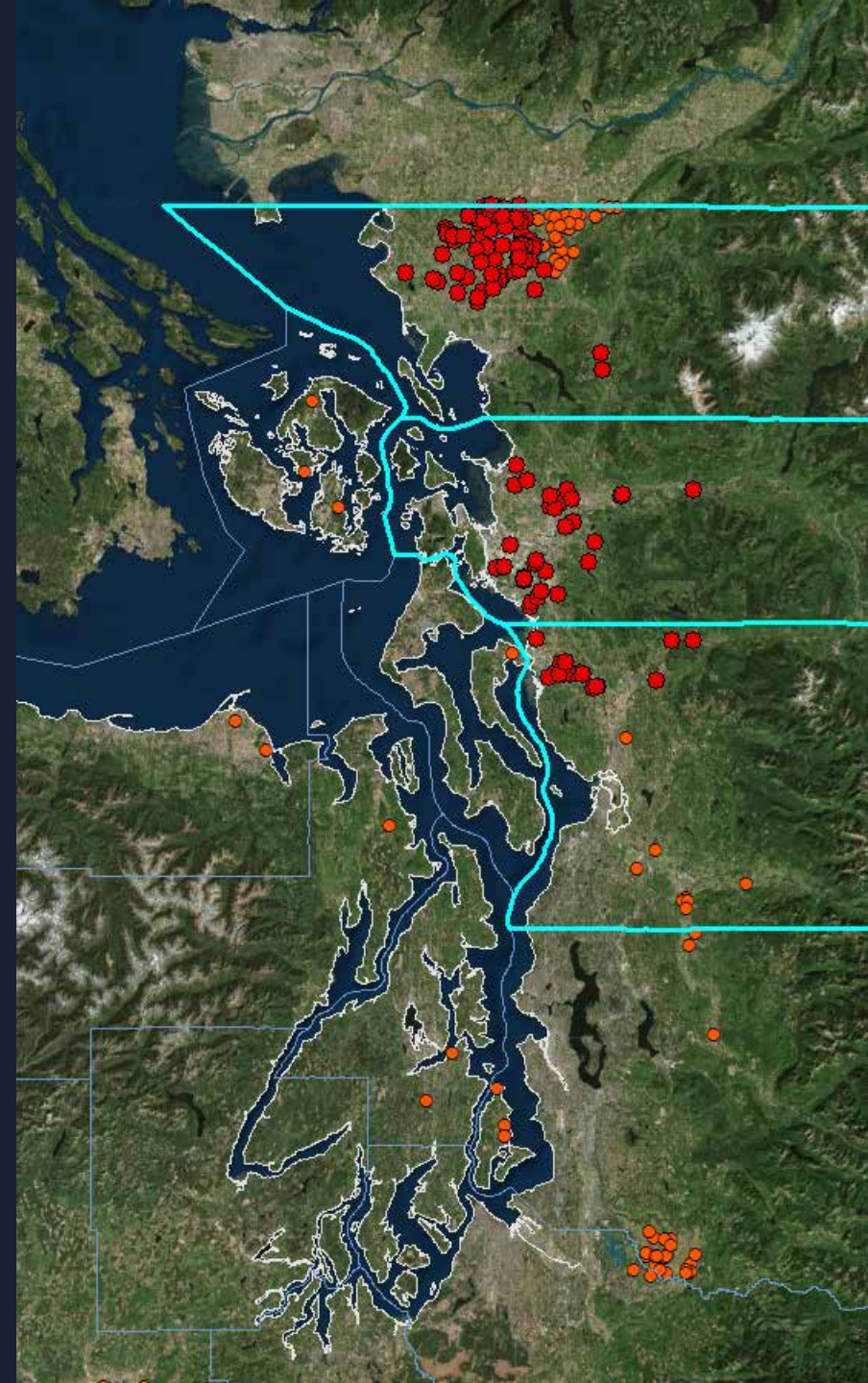
Michael Isensee
Washington Department of Agriculture
Dairy Nutrient Management Program

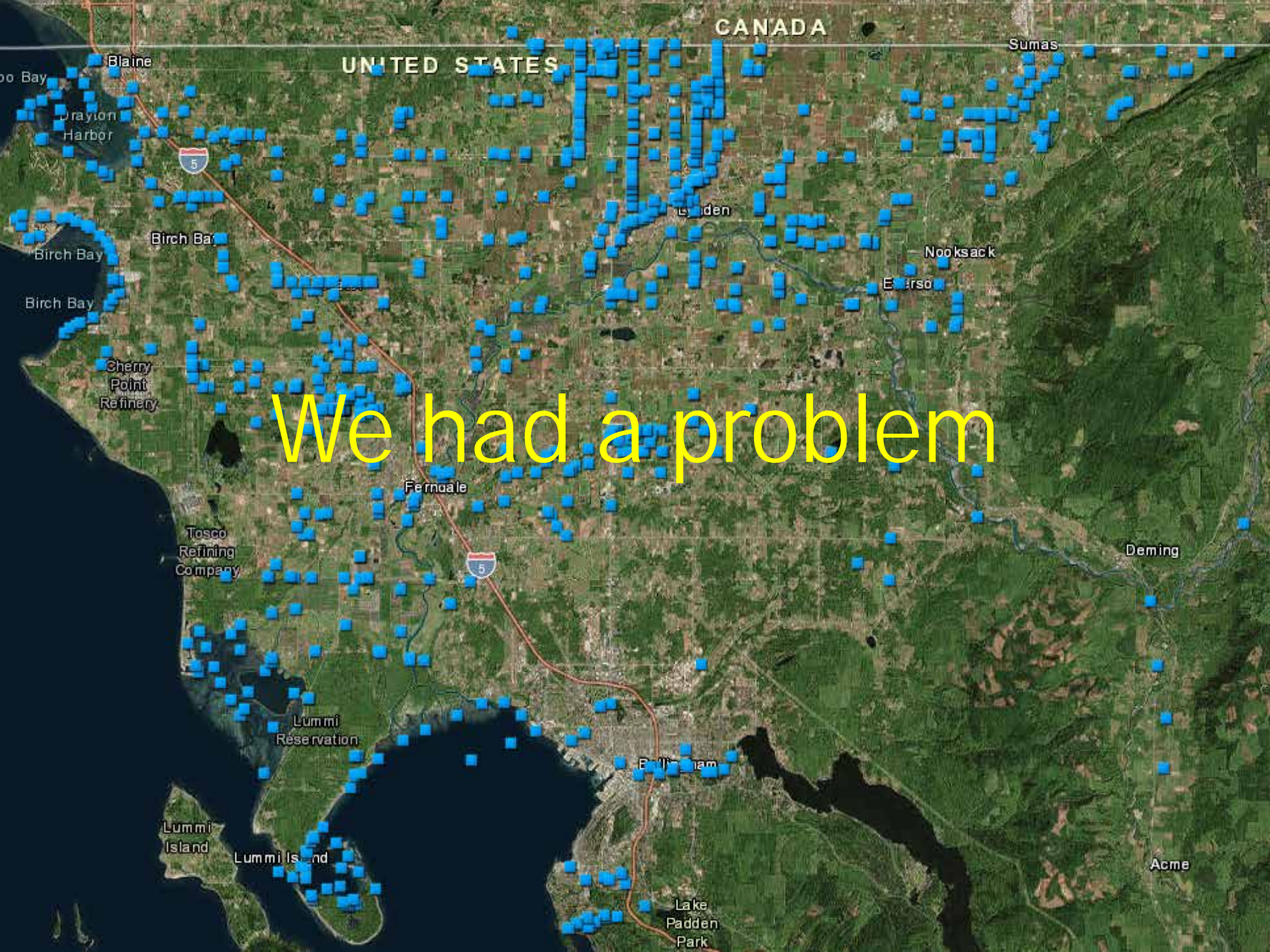
Washington Dairy Nutrient Management Program



Washington Dairy Nutrient Management Program

- NEP Grant
- Collaborate
- PIC
- Salish Sea has 200 WA dairies
- 60% located in NEP focus areas





CANADA

UNITED STATES

We had a problem

oo Bay

Blaine

Sumas

Drayton Harbor

Birch Bay

Lynden

Nooksack

Birch Bay

Birch Bay

Cherry Point Refinery

Everett

Fernale

Deming

Tosco Refining Company

Lummi Reservation

Everett

Lummi Island

Lummi Island

Acme

Lake Padden Park

	CA14aq	CA14ap	CA14ao	CA14an	CA14ala	CA14al	CA14ak	CA14ak2	CA14ak1	CA14aj*	CA14aj	CA14ai	CA14ah	CA14agb	CA14aga	CA14ag	CA14aft	CA14af	CA14ae	CA14ad	CA14ab	
Oct 16																						
Oct 17																				2,700	2,400	
Oct 18																						
Oct 19													68		480	28	46/64	114	164		460	
Oct 20																					8,000	
Oct 26					20	2,300	17,800				1,028	10,600	5,300		900		3,200				746	
Nov 2	719	773	430	319	22	420	1,691	590	210	2,100	937	1,064	855		8,500	250	7,700	6,700	2,200		11,200	
Nov 9												100	190	480	600	250						1,019
Nov 16													28	570		230		290				60
Nov 30																						72



Buried in data

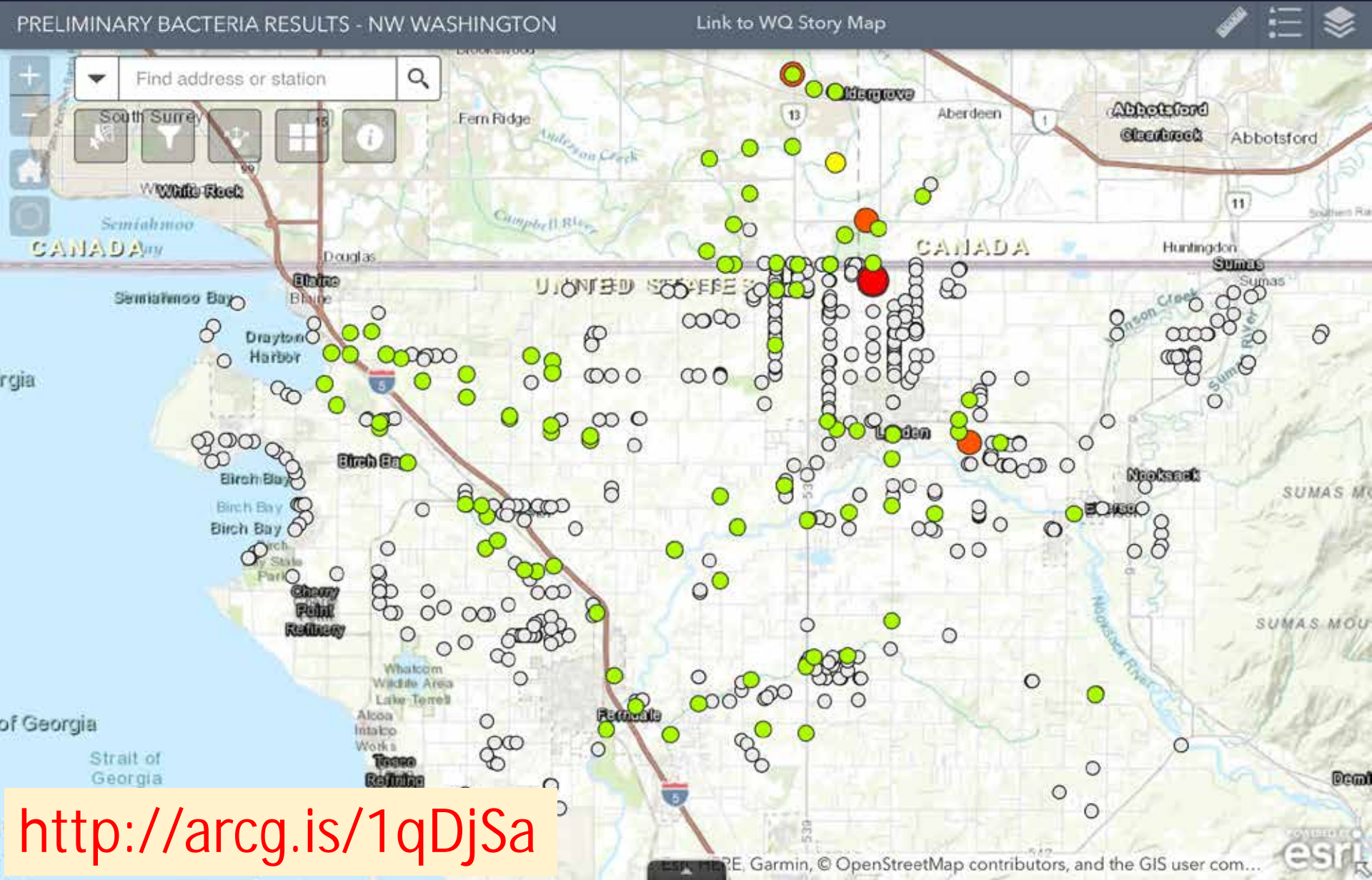
Hi,
Below are the results from 10/13/17 that are above 200FC/

Terrell:
TribFERN1=4400
KICK4=1173
TER6.3=300

California NEP:
CA14aa:330
CA14ab:6400
CA14AF:6500
CA14AFDup:6200
CA14AI:6600
CA6.2: 580
CA6.2DUP:450
CA14C:782

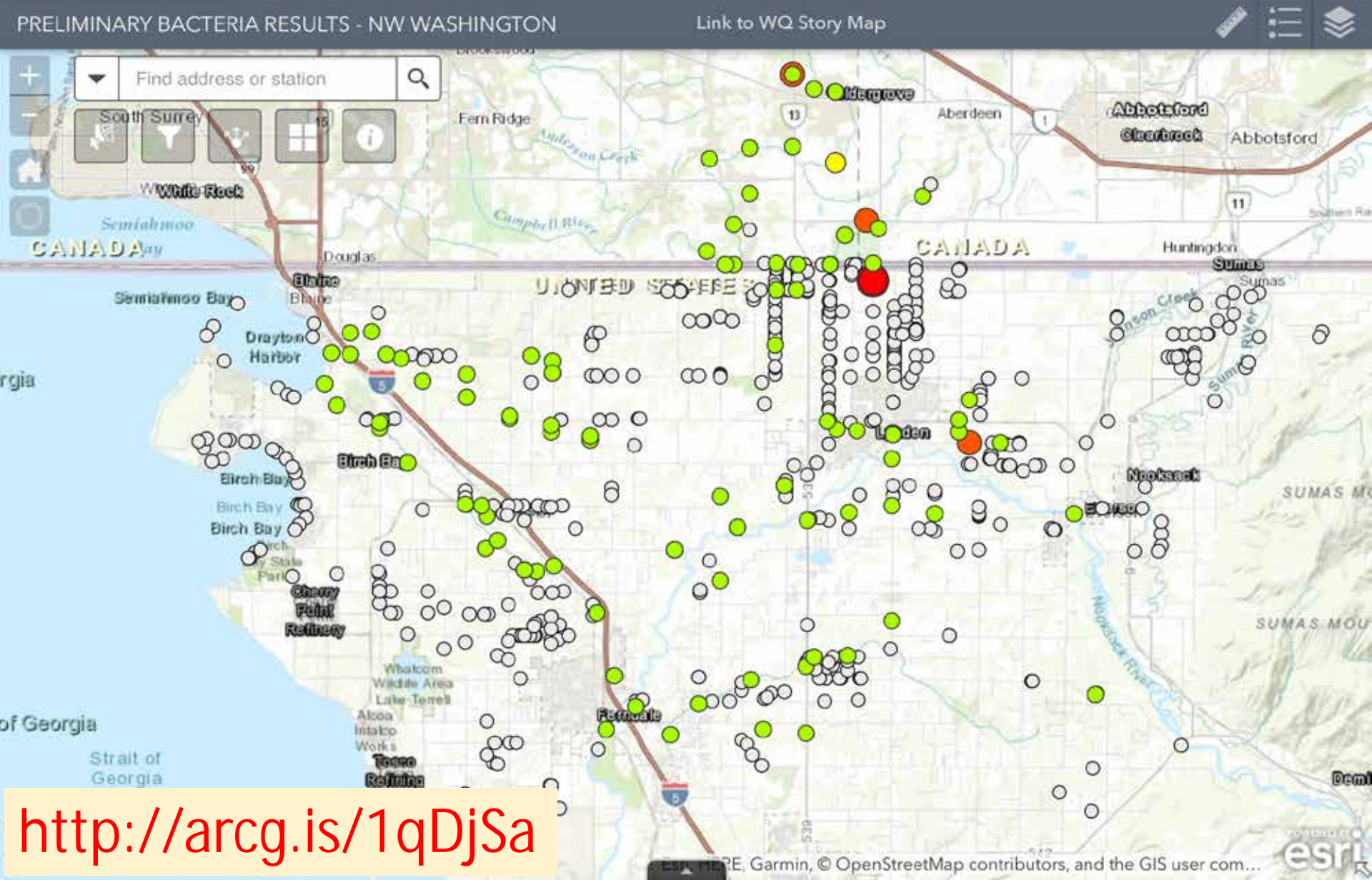
... how shortly

We developed a solution



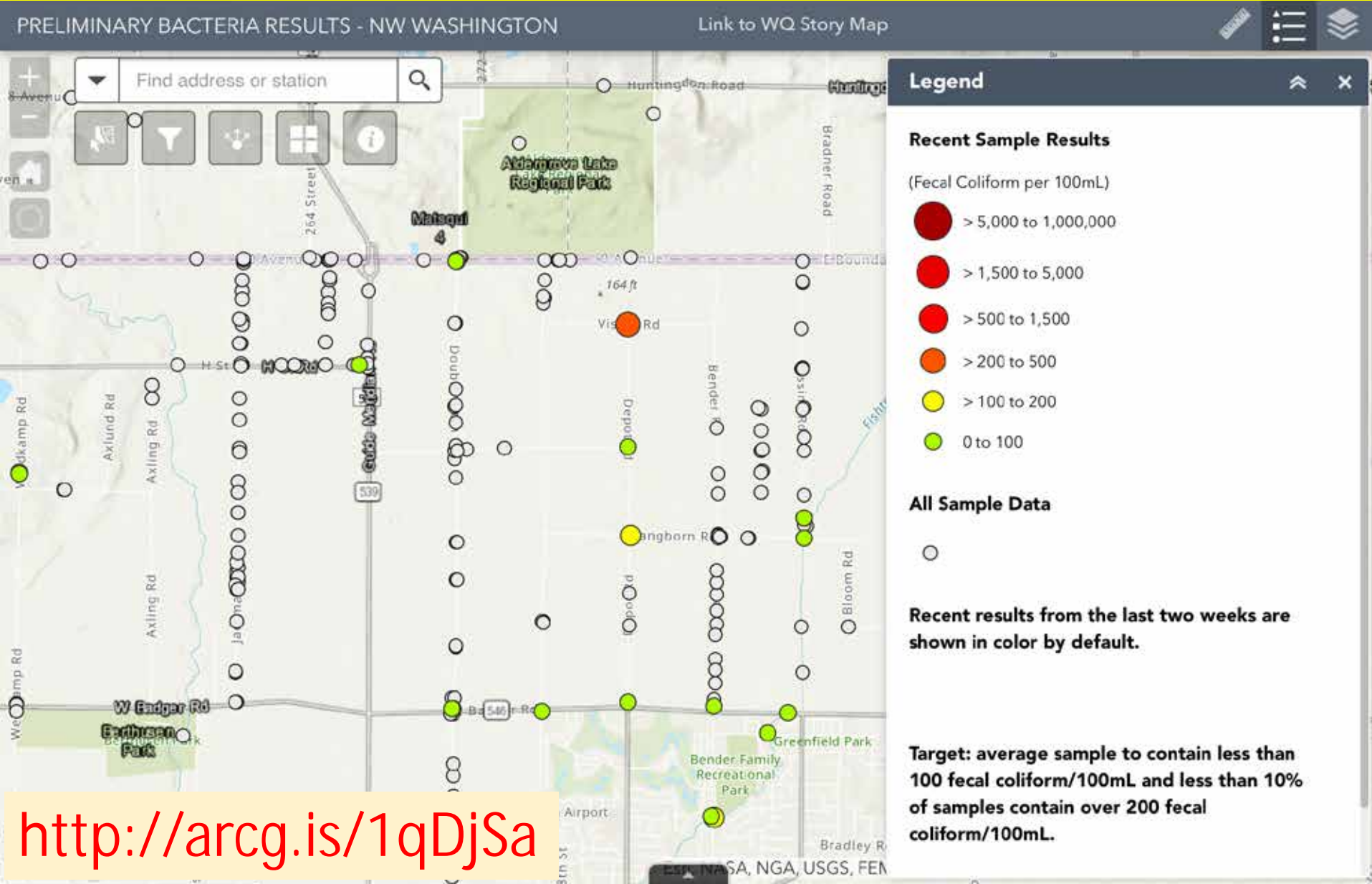
<http://arcg.is/1qDjSa>

March 13, 2018 Results - Posted March 16-22, 2018

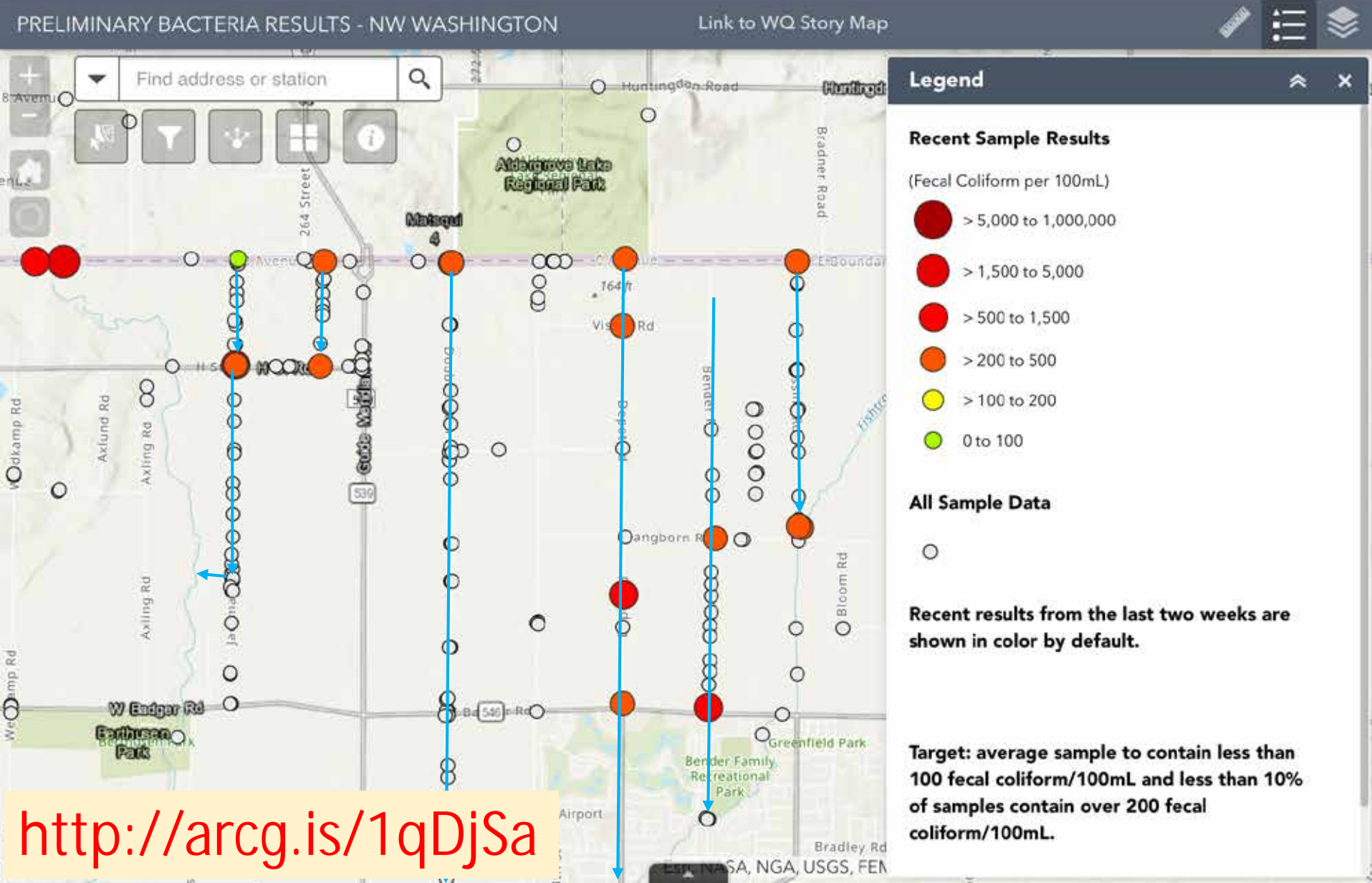


<http://arcg.is/1qDjSa>

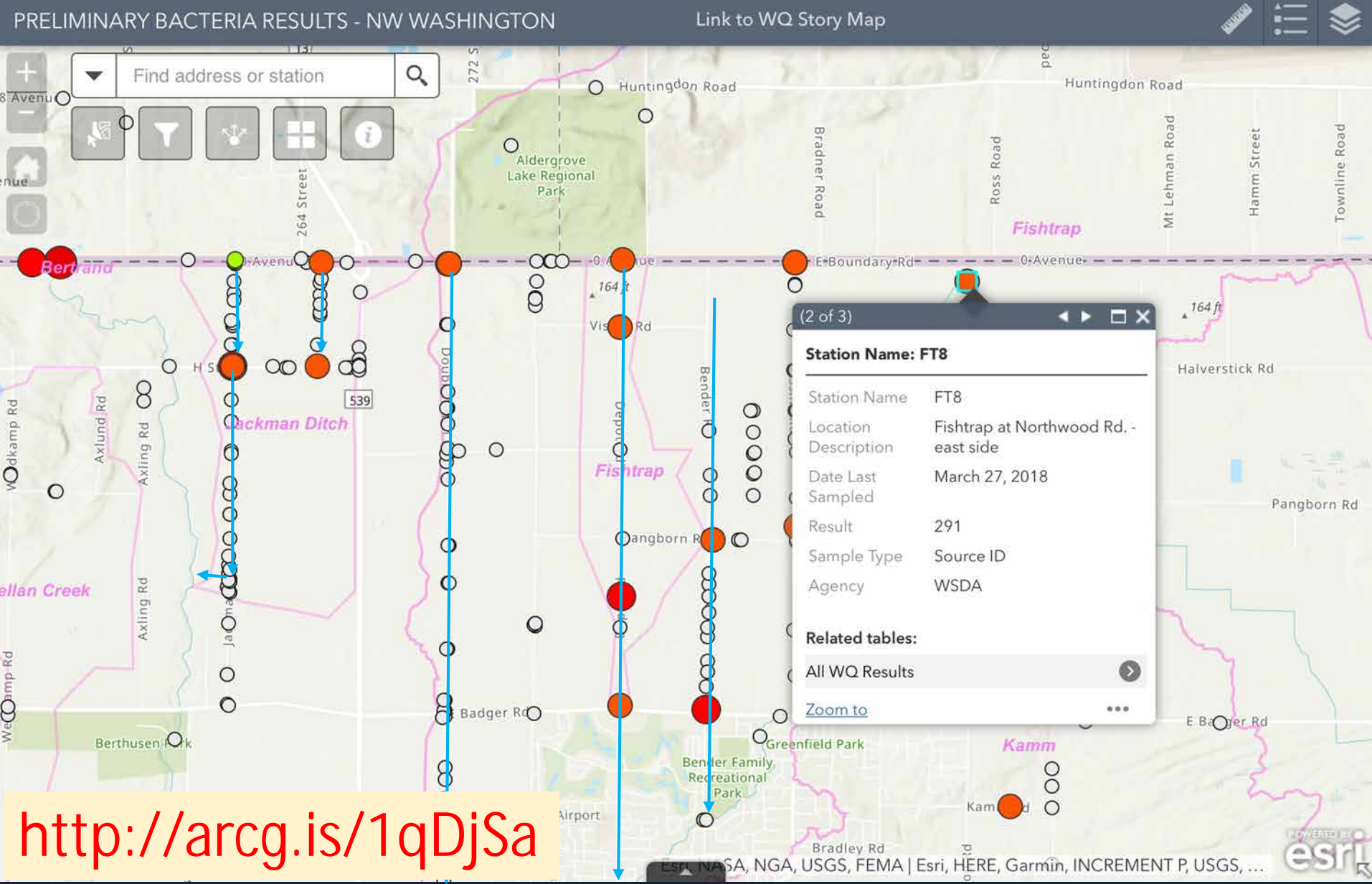
March 26, 2018 Results - Posted March 28, 2018



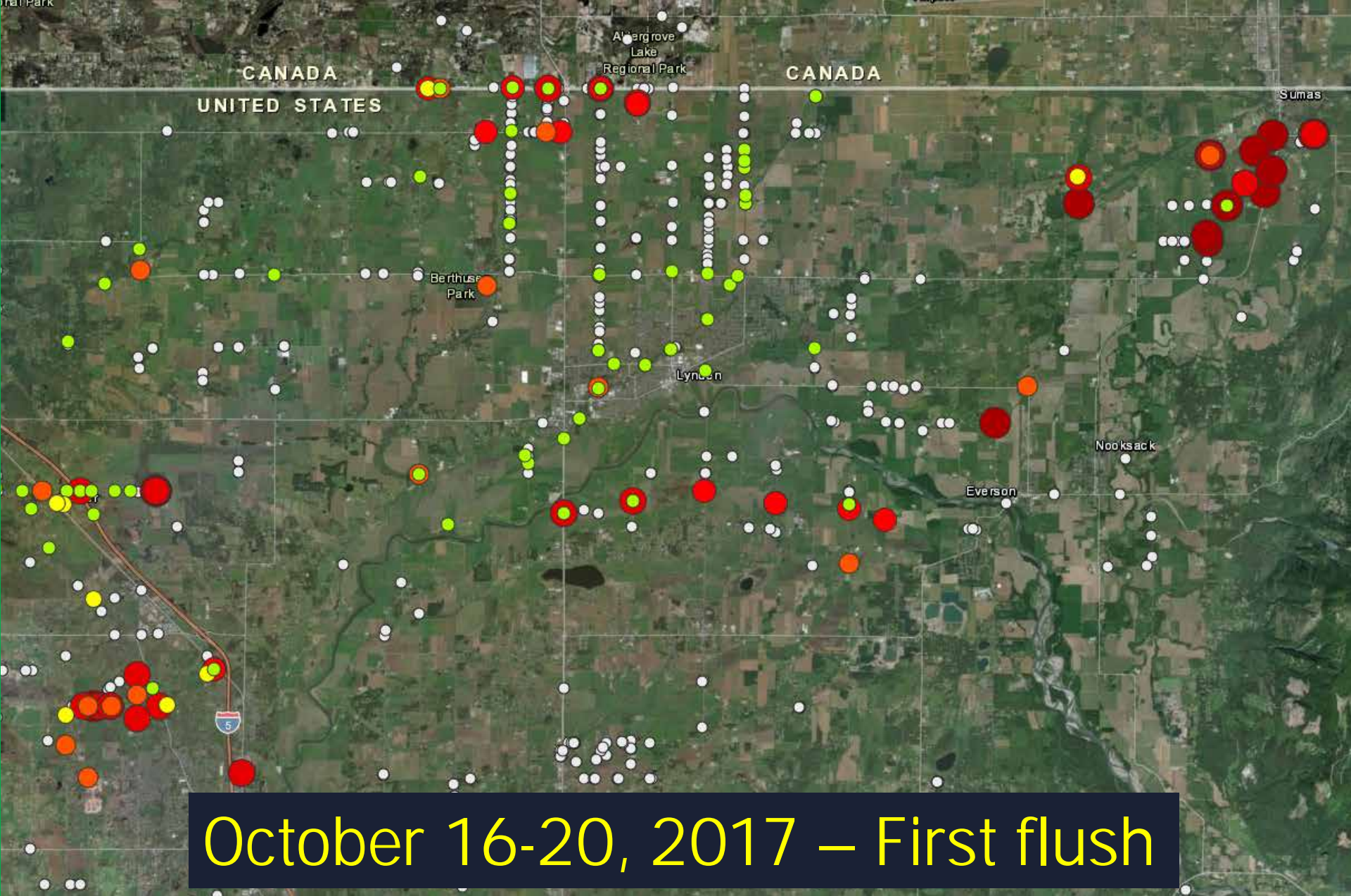
March 27, 2018 Results - Posted March 29, 2018



March 27, 2018 Results - Posted March 29, 2018



<http://arcg.is/1qDjSa>



October 16-20, 2017 – First flush

<http://arcg.is/1qDjSa>

THANKS TO

- Kyrre Flege and Kerri Love, WSDA
- Jessica Kirkpatrick
- Andrew Phay, Whatcom Conservation District

[Click here for a direct link to Results Map](#)



A Story of Water Quality in Northwest Washington

Here in the upper left corner of Washington State we are fortunate to have water all around us. Flowing from the mountains to the Puget Sound, this water makes quite the journey, as it may pass through one of our many cool blue lakes and even the small stream or ditch in your neighborhood before flowing on to the shoreline and into your nearest bay.

This story map was created to share recent water quality results and resources available to help you improve water quality. [Learn about this story map and what you will find within.](#)

The narrative within provides context about the information featured on this site. To explore this story map, you can scroll down with your mouse, or you can select the white up/down arrows or the white radial buttons located on the left side of the page.

[First time viewing the results map?](#)

"This project has been funded wholly or in part by the United States Environmental Protection Agency under assistance agreement PC-01/8001-0 to WSDA. The contents of this document do not necessarily reflect the views and policies of the Environmental Protection Agency, nor does mention of trade names or commercial products constitute endorsement or recommendation for use."

An aerial photograph of a river delta, showing a complex network of water channels and wetlands. The water is a deep blue-grey color, and the surrounding land is a mix of green and brown. The sky is blue with scattered white clouds. A large yellow URL is overlaid on the right side of the image.

<http://arcg.is/1irH8i0>

Questions?

misensee@agr.wa.gov

[Click here for a direct link to Results Map](#)



A Story of Water Quality in Northwest Washington

Here in the upper left corner of Washington State we are fortunate to have water all around us. Flowing from the mountains to the Puget Sound, this water makes quite the journey, as it may pass through one of our many cool blue lakes and even the small stream or ditch in your neighborhood before flowing on to the shoreline and into your nearest bay.

This story map was created to share recent water quality results and resources available to help you improve water quality. [Learn about this story map and what you will find within.](#)

The narrative within provides context about the information featured on this site. To explore this story map, you can scroll down with your mouse, or you can select the white up/down arrows or the white radial buttons located on the left side of the page.

[First time viewing the results map?](#)

"This project has been funded wholly or in part by the United States Environmental Protection Agency under assistance agreement PC-01J8001-0 to WSDA. The contents of this document do not necessarily reflect the views and policies of the Environmental Protection Agency, nor does mention of trade names or commercial products constitute endorsement or recommendation for use."

An aerial photograph of a river delta, showing a large body of water branching into many smaller channels and wetlands. The landscape is a mix of green vegetation and brown earth, with mountains visible in the distance under a blue sky with scattered clouds.

<http://arcg.is/1irH8i0>