



Apr 6th, 9:30 AM - 9:45 AM

## Public outreach: growing and adapting with changing times

Meagan Harris

*Whatcom Conservation District, United States, mharris@whatcomcd.org*

Kate Kimber

*Whatcom County Public Works, United States, KKimber@co.whatcom.wa.us*

Erika Douglas

*Whatcom County Public Works, United States, EDouglas@co.whatcom.wa.us*

Aneka Sweeney

*Whatcom Conservation District, United States, asweeney@whatcomcd.org*

Follow this and additional works at: <https://cedar.wwu.edu/ssec>



Part of the [Fresh Water Studies Commons](#), [Marine Biology Commons](#), [Natural Resources and Conservation Commons](#), and the [Terrestrial and Aquatic Ecology Commons](#)

---

Harris, Meagan; Kimber, Kate; Douglas, Erika; and Sweeney, Aneka, "Public outreach: growing and adapting with changing times" (2018). *Salish Sea Ecosystem Conference*. 480.

<https://cedar.wwu.edu/ssec/2018ssec/allsessions/480>

This Event is brought to you for free and open access by the Conferences and Events at Western CEDAR. It has been accepted for inclusion in Salish Sea Ecosystem Conference by an authorized administrator of Western CEDAR. For more information, please contact [westerncedar@wwu.edu](mailto:westerncedar@wwu.edu).

Lots of Hard Work

1988

2014



First Downgrades

PIC Program

# The Northern Light

December 15 - 22, 2016

Community Newspaper of Blaine and Birch Bay

FREE

## Lift on harvesting restrictions prompts a shell-ebriation

BY STEFANIE DONAHUE

Following the recent announcement to lift shellfish harvesting restrictions on 810 acres of Drayton Harbor, a multitude of local and statewide advocates are taking a moment to celebrate.

Beginning at 4 p.m. on Friday, December 16, members of the public are invited to take part in a "shell-ebriation" hosted to honor the more than two decades of work by groups throughout the city, county and state to improve water quality in Drayton

Harbor. Several will be in attendance to speak at the event and discuss the history of the effort, which is still ongoing.

Starting in the mid-1990s, high levels of fecal coliform pollution plagued the water and spurred closures throughout the harbor. Since then, several have come together to improve water quality and restore harvesting access.

Efforts led to examination of on-site septic systems, management of nearby livestock waste and outreach to boat owners about direct discharge.

Several were pleased to receive the announcement from the Washington State Department of Health in early December after tests revealed noticeable improvements to water quality as a result of their actions.

The event will take place at Drayton Harbor Oyster Company, located at 677 Peace Portal Drive.

Tents and heaters will be set up outside for overflow, but the public is encouraged to dress for cold weather as a precaution.







# Community Partners

**Whatcom County Public Works**

**Whatcom County Health Department**

**Whatcom Conservation District**

**City of Blaine**

**Blaine Chamber of Commerce**

**Drayton Harbor Community Oyster Farm**

**Drayton Harbor Oyster Company**

**Watershed Improvement District**

**Nooksack Indian Tribe**

**WA State Department of Health**

**WA State Department of Agriculture**

**WA Department of Ecology**





Encourage  
individual  
actions

Personalize  
government

Celebrate  
community  
successes

## Outreach Goals

Build trust  
through  
relationships

Reach online  
audiences

Build trust  
through  
transparency





2nd Annual Drayton Harbor

# SHELL-EBRATION



December 15th 4-6 PM

H Street Plaza Blaine, WA

OYSTERS & REFRESHMENTS

AWARDS CEREMONY 4:30PM

Celebrate  
water  
quality!

Questions?  
(360)  
778-6302

MAMMUT

Hello  
my name is

Corina

I'm doing my part for  
water quality!



I use public restrooms or  
outhouses at the beach.



I plant trees and shrubs  
along creeks.




Encourage  
individual  
actions







Personalize  
government



Build trust  
through  
relationships

Photo: C. Kinzer, CKImageart.com

Celebrate  
community  
successes



Photo: C. Kinzer, CKImageart.com



# Evaluating and Maintaining Septic Systems Costs Money. ***We Can Help.***

Having your system regularly inspected and performing maintenance tasks saves you money in the long run and helps protect our waters, but we understand that it takes time and money. The septic rebate program can reimburse you for costs associated with a system evaluation, installation of equipment, or septic tank pumping performed by a licensed professional. **Funding is limited and rebates will be awarded on a first-come, first served basis to qualified homeowners until funds are exhausted.**

Visit our website or contact us to find out if you qualify:

Website: <http://www.whatcomcounty.us/2257>

Phone: (360) 778-6230

Address: 322 N. Commercial Street, Ste.110 Bellingham, WA 98225



**\$100**

**Evaluation  
or  
Equipment**

**OR**

**\$200**

**Septic  
Tank  
Pumping**

**Drayton Harbor  
2014 - 2015**

**76**  
**Rebates** **\$8,000**

**Rebate Program  
2014 - Present**

**332**  
**Rebates** **\$60,000**



# Evaluating and Maintaining Septic System Costs Money. ***We Can Help.***

Having your system regularly inspected and performing maintenance tasks saves you money in the long run and helps protect our waters, but we understand that it takes time and money. The septic rebate program can reimburse you for costs associated with a system evaluation, installation of equipment, or septic tank pumping performed by a licensed professional. **Funding is limited and rebates will be awarded on a first-come, first served basis to qualified homeowners until funds are exhausted.**

Encourage  
individual  
actions

Build trust  
through  
relationships

Visit our website or contact us to find out if you qualify:

Website: <http://www.whatcomcounty.us/2257>

Phone: (360) 778-6230

Address: 322 N. Commercial Street, Ste.110 Bellingham, WA 98225



# Lummi Bay Water Quality

Jordan/Schell Drainages

March 2018

**Why is Clean Water Important?** Clean water is essential for human health and for the health of fish, shellfish, wildlife, and livestock. Human contact with fecal contaminated waters can cause illnesses such as gastroenteritis, skin rashes and upper respiratory infections.



### What are Fecal Coliform Bacteria?

Fecal coliform bacteria are found in human and animal feces (poop). Detection in a creek is a sign that pathogens from these wastes may be polluting the water.

**E. coli** are a fecal coliform bacteria

**In Your Neighborhood:** The creeks and ditch systems in your neighborhood travel downstream to Slater Road and then discharge into Lummi Bay. At Slater Road, most of creeks and ditches are not meeting water quality standards for bacteria. Higher bacteria levels have been seen in Lummi Bay the last two years, threatening the area with a shellfish harvesting closure.

For more information on water quality near you, visit: [whatcomcounty.us/1672](http://whatcomcounty.us/1672)

### Too Much Bacteria

High bacteria levels have been observed at several creeks crossing Slater Road and flowing into Lummi Bay.



### Where Do the Bacteria Come From?

Potential sources of bacteria in your watershed include:

- 1) Animal waste from livestock, domestic pets, and wildlife
- 2) Human sewage from failing septic systems, leaking sewer lines or cross-connections between sewer and stormwater systems

Other potential sources are continually being investigated.



# Diverse Sources Need Diverse Solutions

### What are the Solutions?

Just as there are many potential sources of bacteria, there are many different solutions. **Clean water starts with YOU!** Here are some tips for protecting water quality during the dry season:

- **Smart manure applications:** Use the manure spreading advisory tool at [www.whatcomcd.org/MSA](http://www.whatcomcd.org/MSA)
- **Prevent livestock access to creeks:** Provide fencing and off-channel watering
- **Improve pasture management:** Slow and filter polluted runoff
- **Clean up dog waste:** Scoop it, bag it, trash it, especially near creeks & ditches
- **Secure pet food and garbage:** Keep wildlife populations under control
- **Maintain your septic system:** Get the required evaluation every 1-3 years, depending on your system. Call the Health Dept. for more info: (360) 778-6000

### Community Solutions for Clean Water



### Need Some Help?

- **Free, confidential risk assessments for your small farm** are available through the Whatcom Conservation District. Do you have questions about mud, manure storage, pasture rotation, or other concerns on your small farm? (360) 526-2381 or [wcd@whatcomcd.org](mailto:wcd@whatcomcd.org)
- **Rebate programs** are available to assist with septic systems and small farms. Complete a septic system or small farm workshop and become eligible for a rebate for \$100-200 for select activities or supplies. (360) 778-6230 or [PICProgram@co.whatcom.wa.gov](mailto:PICProgram@co.whatcom.wa.gov)

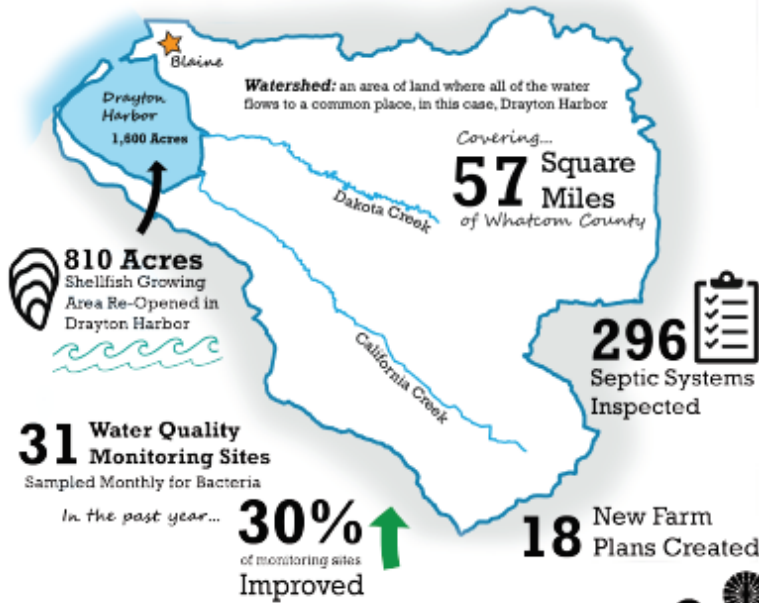
Encourage individual actions

Personalize government



# Drayton Harbor Watershed Newsletter

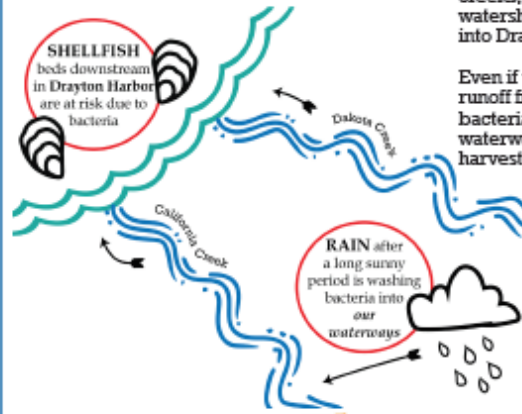
## A Year in Review By the Numbers....



Water Quality is improving in the Drayton Harbor watershed due to the combined efforts of landowners, community members, and programs dedicated to reducing bacteria pollution. Whatcom County's Pollution Identification, and Correction (PIC) program uses water quality monitoring, community education, and technical and financial assistance to protect public health and prevent surface water pollution.

Key potential sources of bacteria in Whatcom County are (1) animal waste from livestock, domestic pets, waterfowl and other wildlife, and (2) human sewage from failing on-site septic systems (OSS) or leaks in municipal sewage systems.

## It's The Wet Season in Whatcom County



October through April is a critical period when the risk of bacteria getting into surface water is high because of storm runoff. The creeks, ditches, and stormwater pipes in the watershed create a network of water that flows into Drayton Harbor.

Even if your property is not next to a creek, runoff from rain flowing into ditches can carry bacteria all the way to the harbor. Bacteria in waterways leads to swimming and shellfish harvesting closures.

**Questions about bacteria pollution?**  
**Contact the PIC program at:**  
 (360) 778-6230 or  
 PICprogram@co.whatcom.wa.us  
**website:**  
[www.whatcomcounty.us/1072/Water-Quality](http://www.whatcomcounty.us/1072/Water-Quality)

## Got Mud?

### The Whatcom Conservation District Can Help!

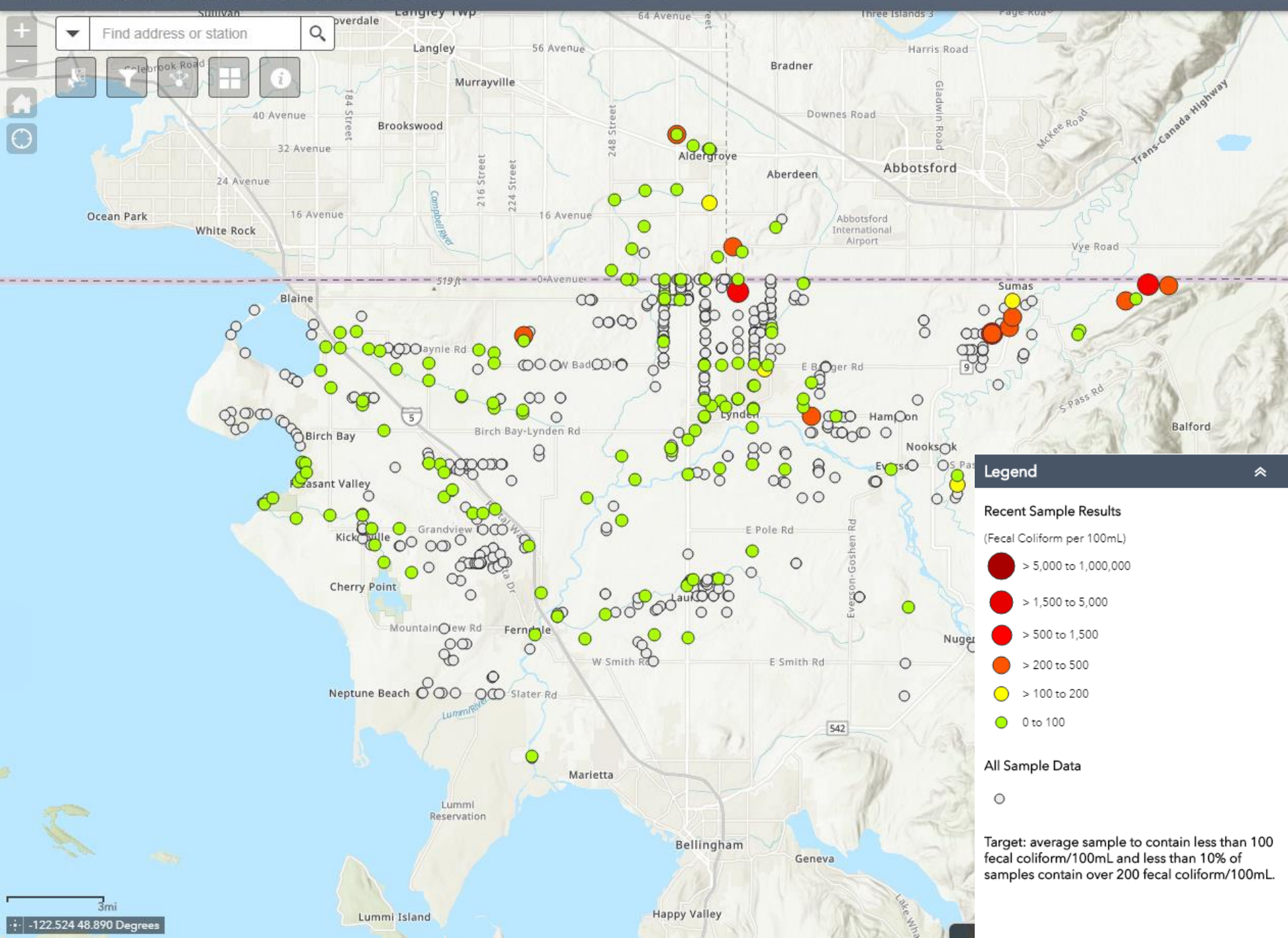
- Create a small, dry winter paddock
- Install/repair gutters and downspouts
- Cover and store manure pile away from water
- Grow vegetative filter strips along ditches
- Improve the health of animals and pasture!



The Whatcom Conservation District is Confidential, Confidential, Confidential

**Build trust through transparency**

**Celebrate community successes**



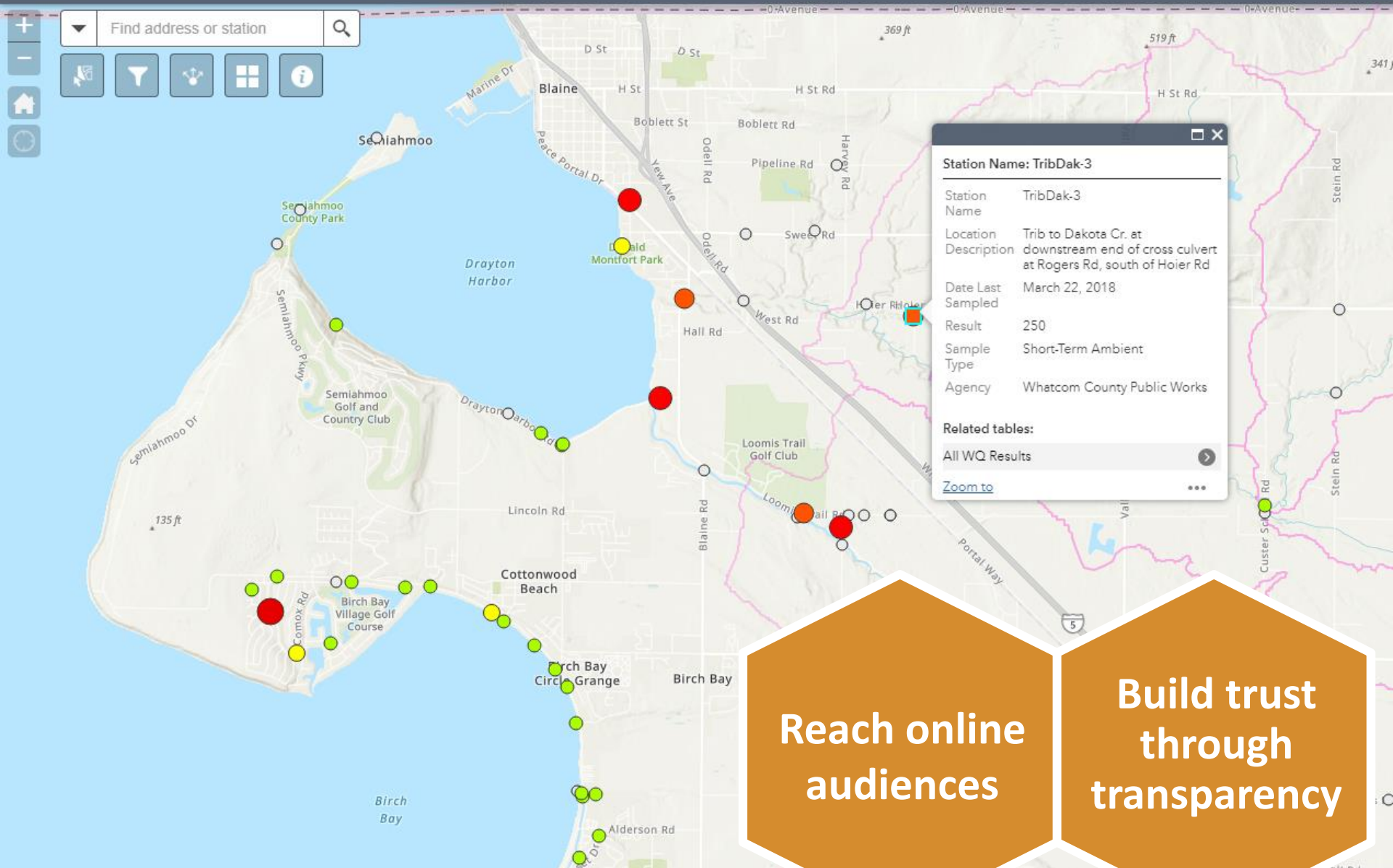
Legend

- Recent Sample Results**  
(Fecal Coliform per 100mL)
- > 5,000 to 1,000,000
  - > 1,500 to 5,000
  - > 500 to 1,500
  - > 200 to 500
  - > 100 to 200
  - 0 to 100

**All Sample Data**

- 

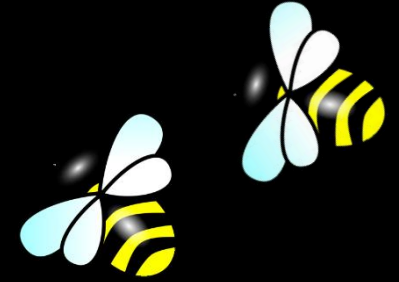
Target: average sample to contain less than 100 fecal coliform/100mL and less than 10% of samples contain over 200 fecal coliform/100mL.



Reach online audiences

Build trust through transparency

# Takeaways for success



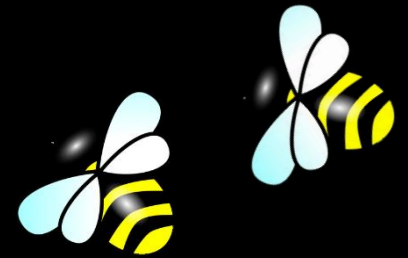
Use a combination of approaches

Keep materials simple and visually appealing

Don't be afraid to try new things

Good communication and collaboration with partners is key to success

# Questions?



## **Kate Kimber**

Whatcom County Public Works

Kkimber@co.Whatcom.wa.us

## **Meg Harris**

Whatcom Conservation District

mharris@whatcomcd.org

*"This project has been funded wholly or in part by the United States Environmental Protection Agency under assistance agreement PC-01118001 through the Washington State Department of Health. The contents of this document do not necessarily reflect the views and policies of the Environmental Protection Agency or the Washington State Department of Health, nor does mention of trade names or commercial products constitute endorsement or recommendation for use."*