



Apr 6th, 10:45 AM - 11:00 AM

## City Habitats: thriving people, thriving nature and solving stormwater collaboratively as a region

Aaron Clark

*Stewardship Partners, United States, ac@stewardshippartners.org*

Chirstin Hilton

*The Nature Conservancy of Washington, United States, chilton@TNC.ORG*

Jessie Israel

*The Nature Conservancy of Washington, United States, jessie.israel@tnc.org*

Hannah Kett

*The Nature Conservancy of Washington, United States, hannah.kett@TNC.ORG*

Danielle Shaw

*Washington Environmental Council, United States, danielle@wecprotects.org*

*See next page for additional authors*

Follow this and additional works at: <https://cedar.wwu.edu/ssec>



Part of the [Fresh Water Studies Commons](#), [Marine Biology Commons](#), [Natural Resources and Conservation Commons](#), and the [Terrestrial and Aquatic Ecology Commons](#)

---

Clark, Aaron; Hilton, Chirstin; Israel, Jessie; Kett, Hannah; Shaw, Danielle; Watts, Sean; and Emerson, Pam, "City Habitats: thriving people, thriving nature and solving stormwater collaboratively as a region" (2018). *Salish Sea Ecosystem Conference*. 512.

<https://cedar.wwu.edu/ssec/2018ssec/allsessions/512>

This Event is brought to you for free and open access by the Conferences and Events at Western CEDAR. It has been accepted for inclusion in Salish Sea Ecosystem Conference by an authorized administrator of Western CEDAR. For more information, please contact [westerncedar@wwu.edu](mailto:westerncedar@wwu.edu).

---

**Speaker**

Aaron Clark, Chirstin Hilton, Jessie Israel, Hannah Kett, Danielle Shaw, Sean Watts, and Pam Emerson



# city habitats

presented by

**Aaron D. Clark** Ph.D.  Stewardship Partners

**Danielle Shaw**



thriving  
people



thriving  
nature



# Puget Sound:

- Only 76 orcas left
- Chinook salmon in decline
- 20% of shellfish beds closed due to pollution
- 14 million pounds of pollutants go into Puget Sound annually



climate  
change



pollution  
control



physical &  
mental health



childhood  
health



crime  
prevention



environmental  
&  
social equity



economic  
success



growing  
populations

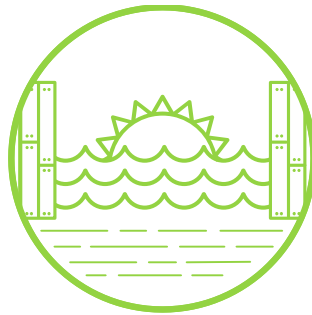
challenges:  
cities & towns



**HOW NATURE  
WORKS FOR US**



**cleaner  
air**  
in our  
communities



**reduced  
flooding**  
from climate  
change



**improved  
walkability**  
traffic calming  
& safer



# nature-based solutions



rain gardens



green roofs



tree canopy



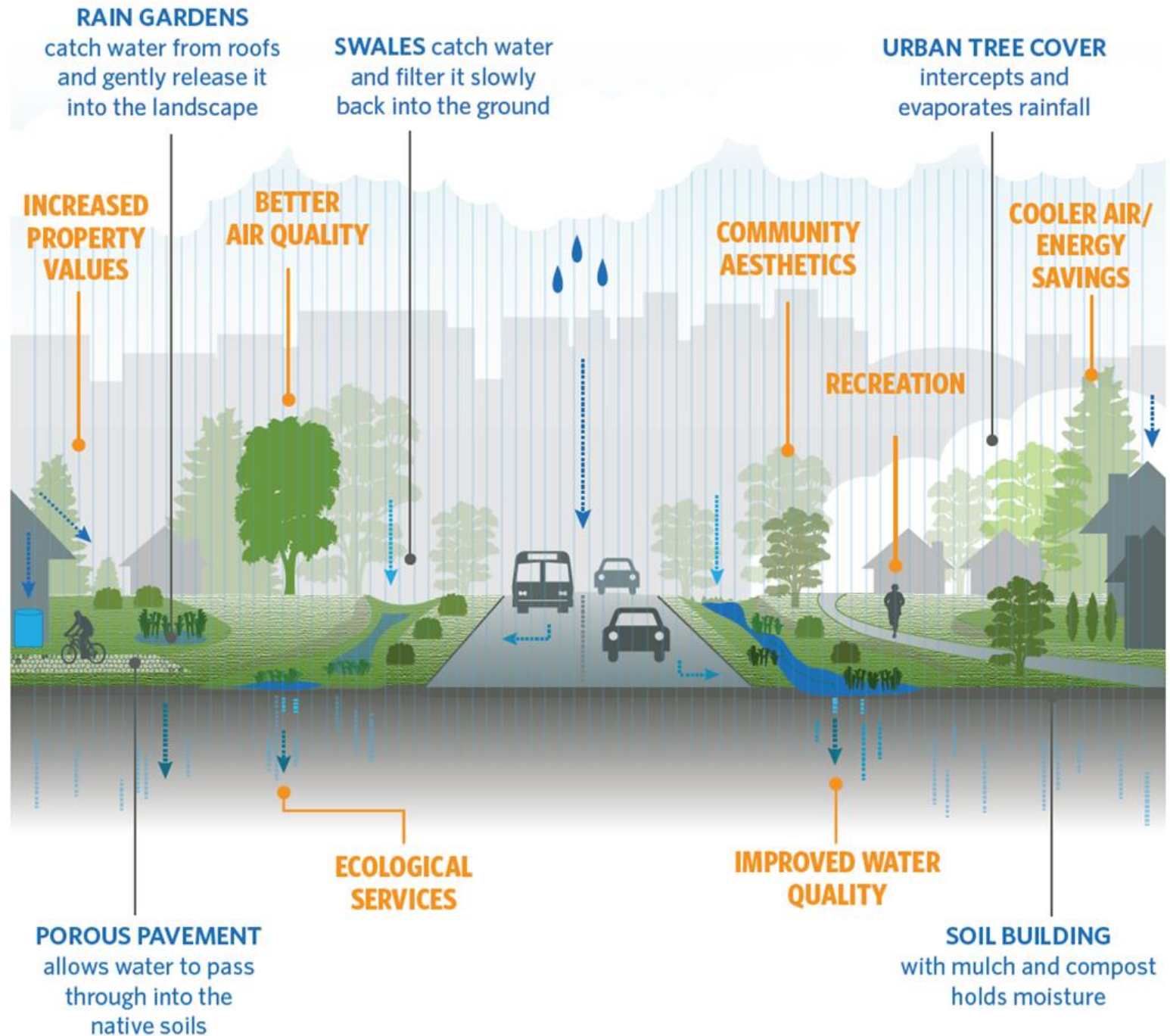
green streets



bioswales



parks and open space





**reduced**  
property crime



**can add**  
**\$1000's**  
to a home's  
value



**3x more**  
**active**  
when living in a  
green community



# case study: Stephen C. Grey & Associates Salmon-Safe



# case study:

## Hillside Paradise Parking Plots

partners: World Relief Seattle, King Conservation District, Hillside Church, Construction for Change

# how do we accelerate?

- Foster collaboration
- Increase public and private investments
- Inspire voluntary action and public demand
- Build and share knowledge and capacity



# Green Infrastructure Summit

**The Nature Conservancy**  
 THE NATURE CONSERVANCY  
 A global organization locally providing innovative, science-based solutions to solving environmental issues.

**WASHINGTON ENVIRONMENTAL COUNCIL**  
 WASHINGTON ENVIRONMENTAL COUNCIL  
 Our mission is to protect, restore, and sustain Washington's environment for all.

**RAIN DOGS DESIGNS**  
 RAIN DOGS DESIGNS  
 Sustainable landscaping design and installation; focus on rain water harvesting and rain garden installations.

**12,000 RAIN GARDENS**  
 12,000 RAIN GARDENS  
 Promoting green infrastructure solutions that communities can adopt to actively help environmental problems stemming from polluted stormwater runoff.

**WESTERN ENVIRONMENTAL LAW CENTER**  
 WESTERN ENVIRONMENTAL LAW CENTER  
 Uses the full power of the law to defend and protect the American West's treasured landscapes, iconic wildlife, and rural communities.

**SEATTLE GREEN SPACES COALITION**  
 SEATTLE GREEN SPACES COALITION  
 Advocacy group to change Seattle policy to diversify urban greenery.

**PUGET SOUND REGIONAL COUNCIL**  
 PUGET SOUND REGIONAL COUNCIL  
 A regional planning agency for transportation planning, economic development and growth management.

**GREEN CITIES GOOD HEALTH PROJECT AT UNIVERSITY OF WASHINGTON**  
 GREEN CITIES GOOD HEALTH PROJECT AT UNIVERSITY OF WASHINGTON  
 Sharing evidence and helping inform policy and programs so that all people in all community's experience nature-based wellness benefits.

**Stewardship Partners**  
 STEWARDSHIP PARTNERS  
 Creating people-based solutions that engage and empower Puget Sound communities as caretakers of the land and water that sustain us.

**ECOSS**  
 ECOSS  
 Educating and empowering business and diverse communities to implement sustainable practices.

**EARTH ECONOMICS**  
 EARTH ECONOMICS  
 Offering a pragmatic, collaborative approach to help organizations make sound investment and policy decisions with nature in mind.

**ISLANDWOOD**  
 ISLANDWOOD  
 Advancing innovative and inclusive education that inspires understanding and stewardship of our planet.

**SNOWMISH**  
 SNOWMISH  
 Working on conservation efforts with farmers, city residents, rural and suburban landowners on a voluntary basis.

**SEATTLE AUDUBON**  
 SEATTLE AUDUBON  
 Seattle Audubon leads a local community in appreciating, understanding, and protecting birds and their natural habitats.

**SEATTLE 2030 DISTRICT**  
 SEATTLE 2030 DISTRICT  
 A high-performance building district in downtown Seattle that aims to reduce environmental impacts of building construction and operations.

**CEGAR GROVE**  
 CEDAR GROVE  
 Cedar Grove transforms waste materials into innovative products that benefit our community.

**SEATTLE PARKS FOUNDATION**  
 SEATTLE PARKS FOUNDATION  
 To create and sustain a thriving system of public spaces and advocate for public policies and investments that improve the health and happiness of all Seattle residents.

**INTERNATIONAL LIVING FUTURE INSTITUTE**  
 INTERNATIONAL LIVING FUTURE INSTITUTE  
 Seeking to create communities that are socially rich, culturally just and ecologically vibrant.

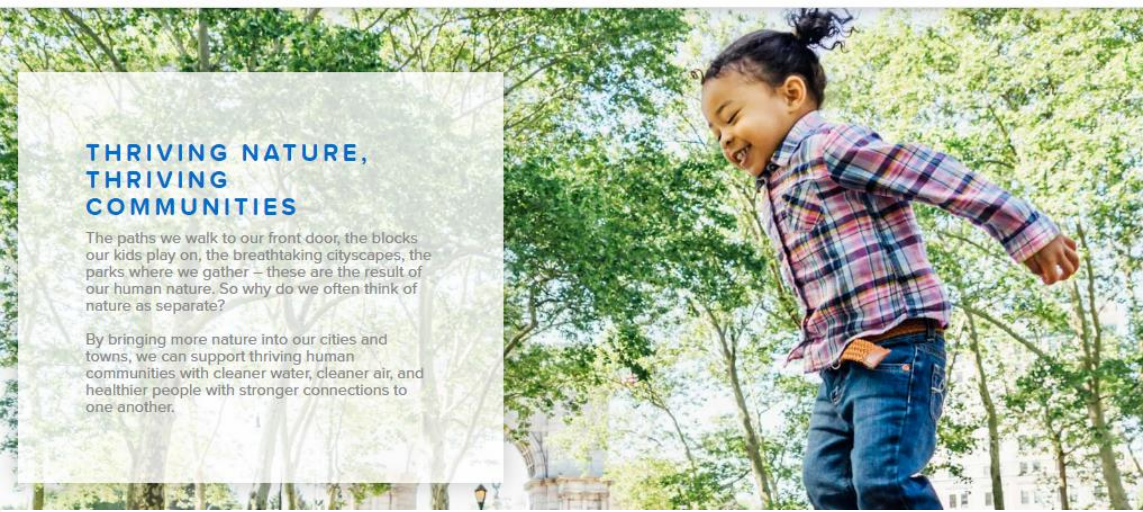
**WASHINGTON GREEN SCHOOLS**  
 WASHINGTON GREEN SCHOOLS  
 Guiding and supporting students and communities to become leaders for the environment.

**LOCAL RESTORATION EARTH CORPS**  
 LOCAL RESTORATION EARTH CORPS  
 EarthCorps  
 Envisioning a world where people and nature thrive together.

**SEATTLE 2030 DISTRICT**  
 SEATTLE 2030 DISTRICT  
 A high-performance building district in downtown Seattle that aims to reduce environmental impacts of building construction and operations.

**SEATTLE AUDUBON SOCIETY**  
 SEATTLE AUDUBON SOCIETY  
 Seattle Audubon leads a local community in appreciating, understanding, and protecting birds and their natural habitats.

**MIGSVR**  
 MIGSVR  
 Seeks to enhance community livability, support revitalization and connect people with places through planning, design, programming, communications or technology.



## THRIVING NATURE, THRIVING COMMUNITIES

The paths we walk to our front door, the blocks our kids play on, the breathtaking cityscapes, the parks where we gather – these are the result of our human nature. So why do we often think of nature as separate?

By bringing more nature into our cities and towns, we can support thriving human communities with cleaner water, cleaner air, and healthier people with stronger connections to one another.



# CityHabitats.org





THE ATGSTORES.COM RAIN GARDEN GIVEAWAY

ENTER FOR YOUR CHANCE TO WIN A

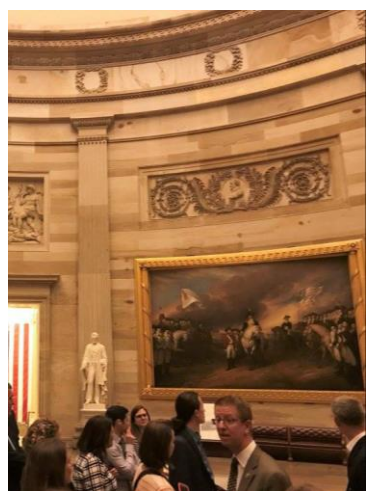
**\$6,000 RAIN GARDEN MAKEOVER!**

- INCLUDES UP TO \$1K IN OUTDOOR FURNITURE -

[ENTER NOW](#)

NO PURCHASE NECESSARY. ENDS 9/23/16.

# Make A Difference Day



# Puget Sound Day on the Hill

# Acceleration Tools

- Shared vision
- Common language
- Leveraging our resources
- Connecting to the next generation
- Curate technical information



**SOUND IMPACTS** ADD A PROJECT - ABOUT DASHBOARD LOG IN SIGN UP

**Introduction**  
Sound Impacts is an online portal for all of the region's practitioners and implementers of Green Infrastructure as well as for anyone curious to see what efforts and investments are being made to protect and improve this region's natural assets.

**Legend**

- Rain Garden
- Bio-retention, and Bioswale
- Invasive Plant Removal
- Tree Planting
- Green Roof
- Permeable Pavement
- Depaving

**Rain Garden**

A rain garden is a bowl-shaped garden designed to capture and filter stormwater runoff from roofs, driveways and other hard surfaces, keeping it from becoming harmful water pollution. Rain gardens are relatively simple to install and feature self-draining soil and easy-to-maintain plants that allow for stormwater infiltration. For simplicity we define "Rain gardens" as an inclusive catch-all for simple as well as engineered, small as well as large versions of this concept, including: Bio-retention facilities, stormwater planters, Bioswales etc.

<p><b>2,970</b> Rain Garden Projects</p> <p>Total Square Feet <b>1,300,683</b></p> <p>Earliest Project Date</p> <p>Latest Project Date</p> <p>+ Add Project</p>	<p><b>30,765,848</b> Gallons Of Runoff Managed</p> <p>Annual estimate based on the simple calculation <b>square footage x annual rainfall x gallons conversion</b></p> <p>For more detailed impact calculations, please visit the dashboard page.</p>
---	---



**WHAT WE DO**

- PLANT:** We plant trees to filter our water, clean our air, and support human health.
- BUILD:** We build our green infrastructure to absorb the water and filter out pollutants.
- DIVERT:** We use the power of nature to catch, clean, and reuse rainwater.
- RAISE:** We raise public awareness and educate the public on the benefits of green infrastructure.



**PLAY A PART IN REIMAGINING OUR CITY HABITATS**

**GET INVOLVED**

Engage in our community.



**JOIN OUR COALITION**

**BRING NATURE INTO YOUR HABITAT**

**VOLUNTEER**



# CHANGE IS COMING

Solve Stormwater → Accelerate & Amplify → “City Habitats”

...



Transform your community to turn the tide on polluted runoff.



It's not really a storm-water project any more

# thank you!



city habitats

Transform your community to turn  
the tide on polluted runoff.



## contact us

**Aaron Clark**

[ac@stewardshippartners.org](mailto:ac@stewardshippartners.org)

**Stewardship Partners**

**Chris Hilton**

[chilton@tnc.org](mailto:chilton@tnc.org)

**The Nature Conservancy**

**Danielle Shaw**

[danielle@wecprotects.org](mailto:danielle@wecprotects.org)

**Washington Environmental Council**