



Apr 28th, 10:15 AM - 11:45 AM

A Collaborative Approach to Developing a Model for Oil Spill Policy Decision Support: Building a better model while learning together

JD Ross Leahy

Follow this and additional works at: <https://cedar.wwu.edu/ssec>



Part of the [Fresh Water Studies Commons](#), [Marine Biology Commons](#), [Natural Resources and Conservation Commons](#), and the [Terrestrial and Aquatic Ecology Commons](#)

Leahy, JD Ross, "A Collaborative Approach to Developing a Model for Oil Spill Policy Decision Support: Building a better model while learning together" (2022). *Salish Sea Ecosystem Conference*. 50.
<https://cedar.wwu.edu/ssec/2022ssec/allsessions/50>

This Event is brought to you for free and open access by the Conferences and Events at Western CEDAR. It has been accepted for inclusion in Salish Sea Ecosystem Conference by an authorized administrator of Western CEDAR. For more information, please contact westerncedar@wwu.edu.



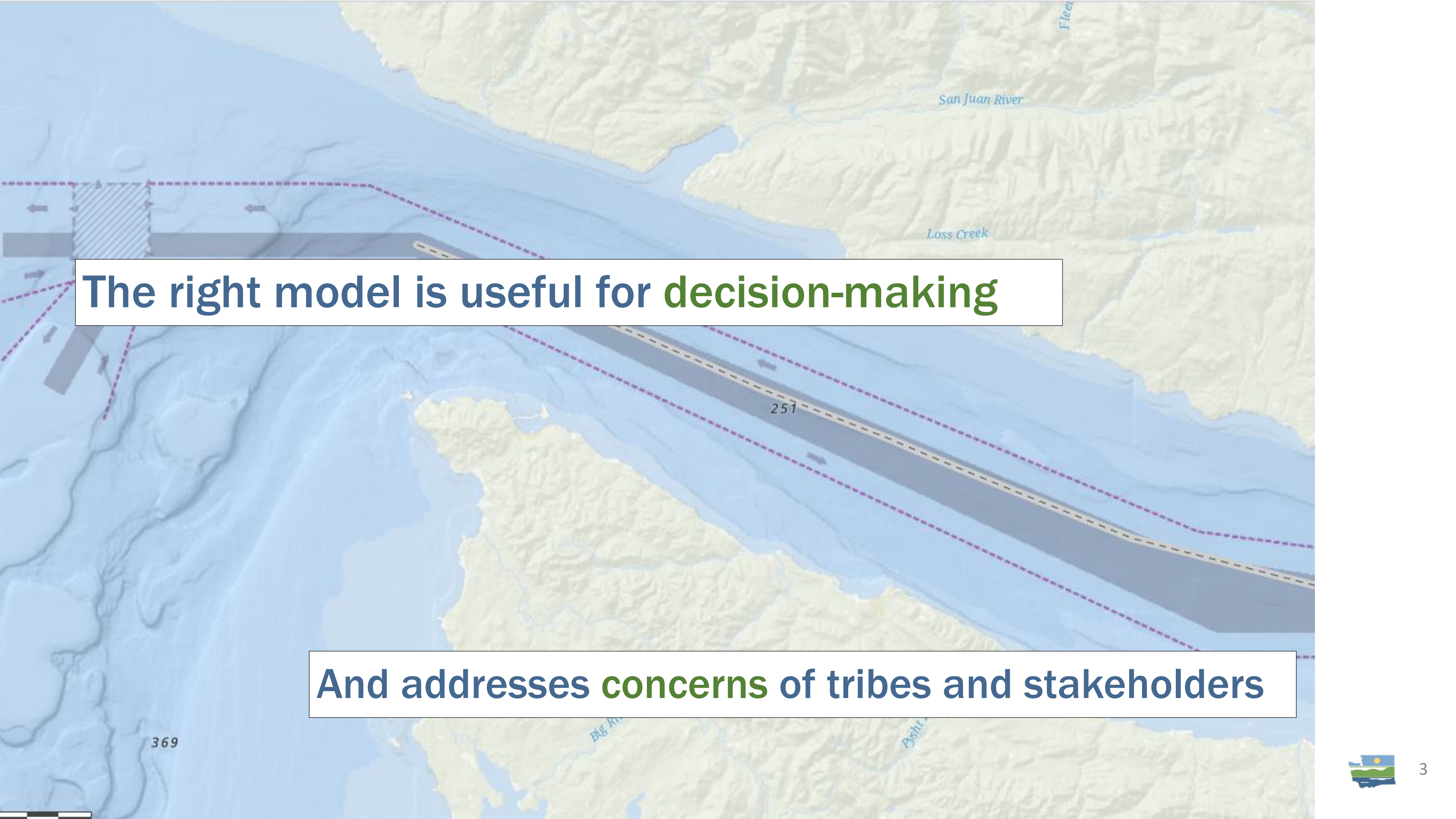
A Collaborative Approach to Developing a Model for Oil Spill Policy Decision Support: Building a better model while learning together

JD Ross Leahy – Maritime Risk Modeling Specialist
April 28, 2022



How can we tell if our policies are reducing the risk of oil spills?





The right model is useful for **decision-making**

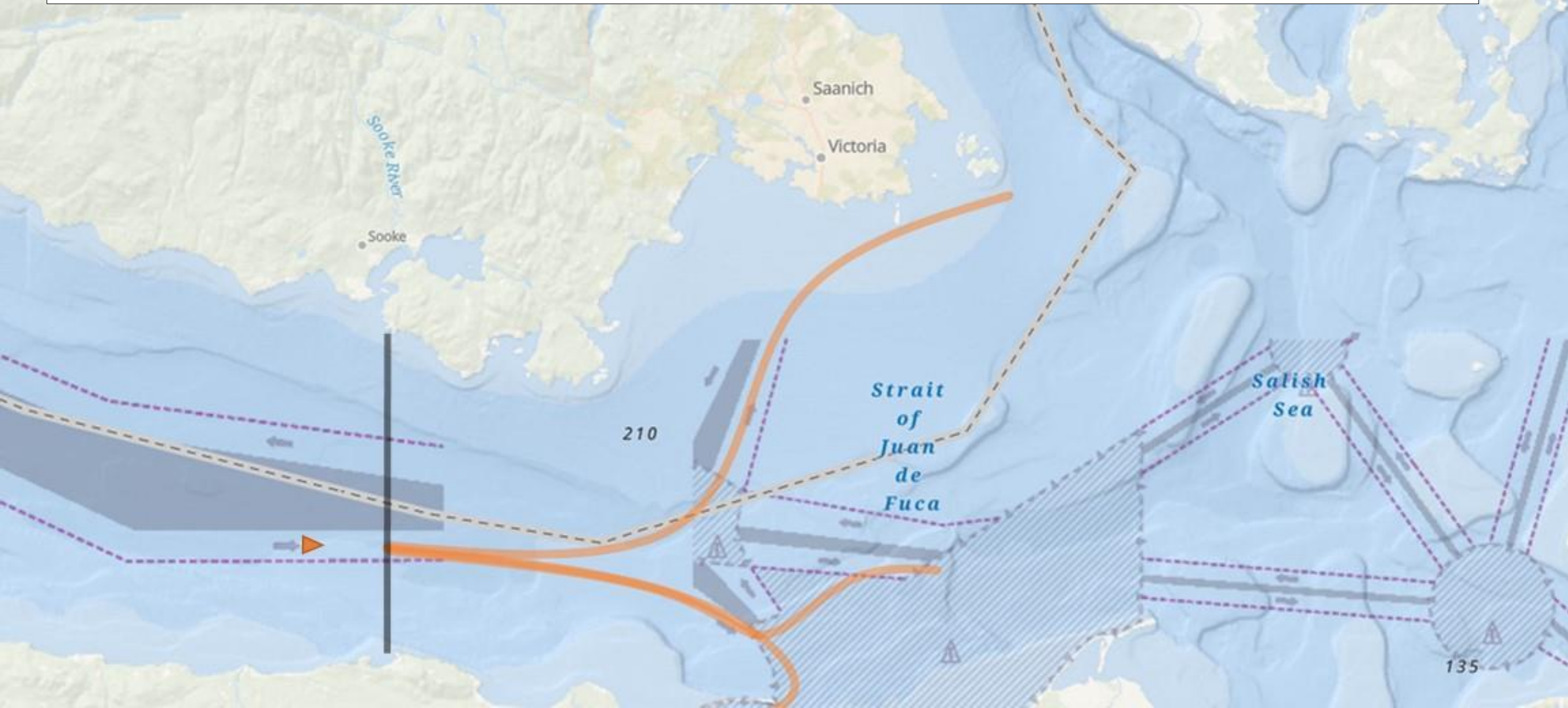
And addresses **concerns** of tribes and stakeholders



**Spill Prevention, Preparedness and Response Program
Washington State Department of Ecology**



Starting outreach early, when little has been decided, can lead to more participant requests than are feasible to complete in the project timeline.





100% of **survey respondents** said the webinars were **helpful**

86% of respondents said the process was **meeting their expectations**



We produced 9 **webinars** and 10 **virtual discussions**.

We had more than 300 participants, and received over 200 **questions and comments**.



Participants shared a desire for an expansive and **comprehensive scope**



Overall interest in **finding out the details** of our implementation



We were challenged because our **open-ended approach** meant there were **more questions than answers**

Clearly, the details mattered but **the details were unknown**



Despite challenges, the process was a **success** – valued by participants and a learning experience for the modeling team

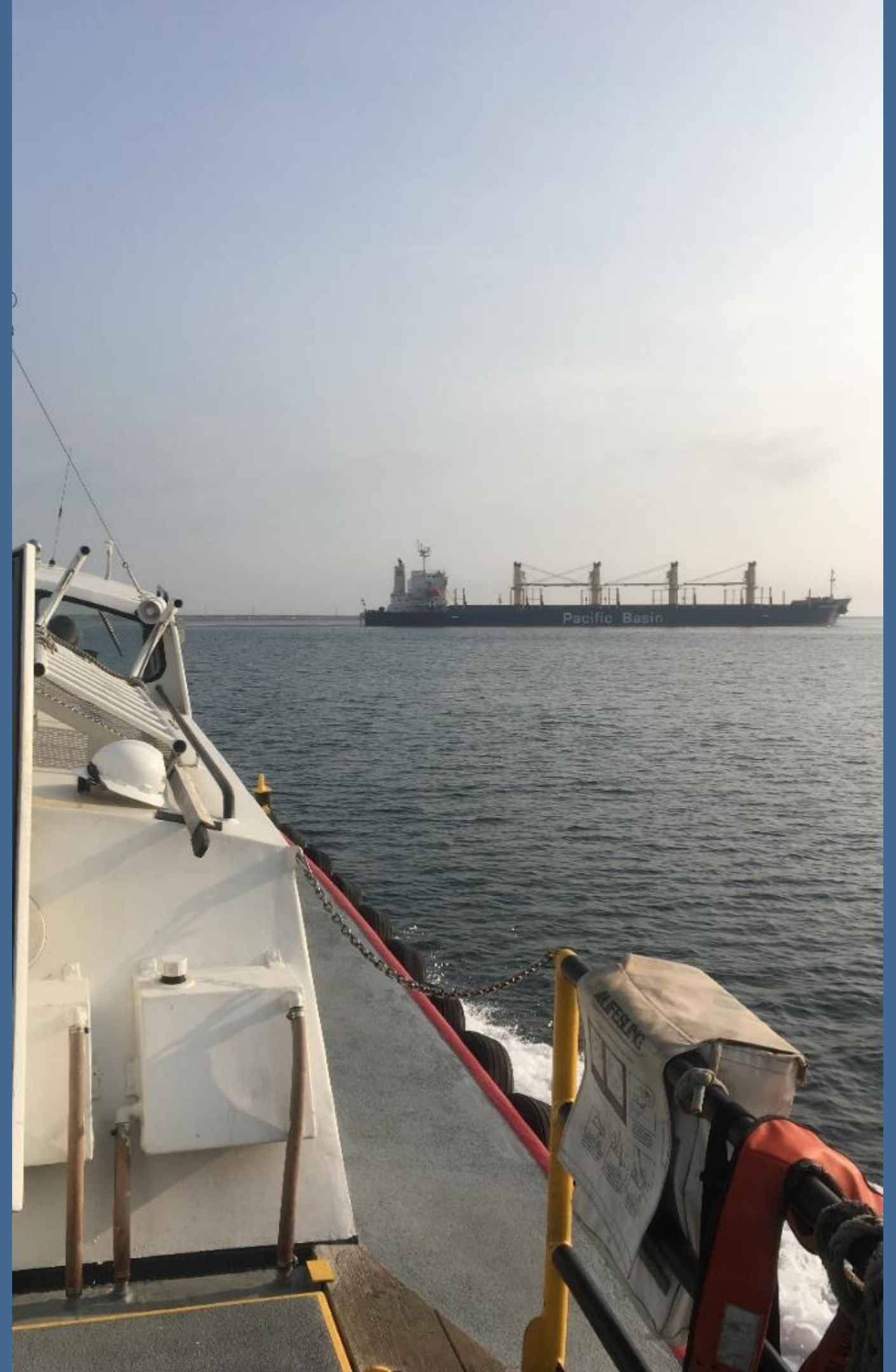
We incorporated this **learning** into our model building in order to make a better model



Hearing stakeholder concerns so **early in the process** meant we were able to keep them in mind **throughout the work** of building the model

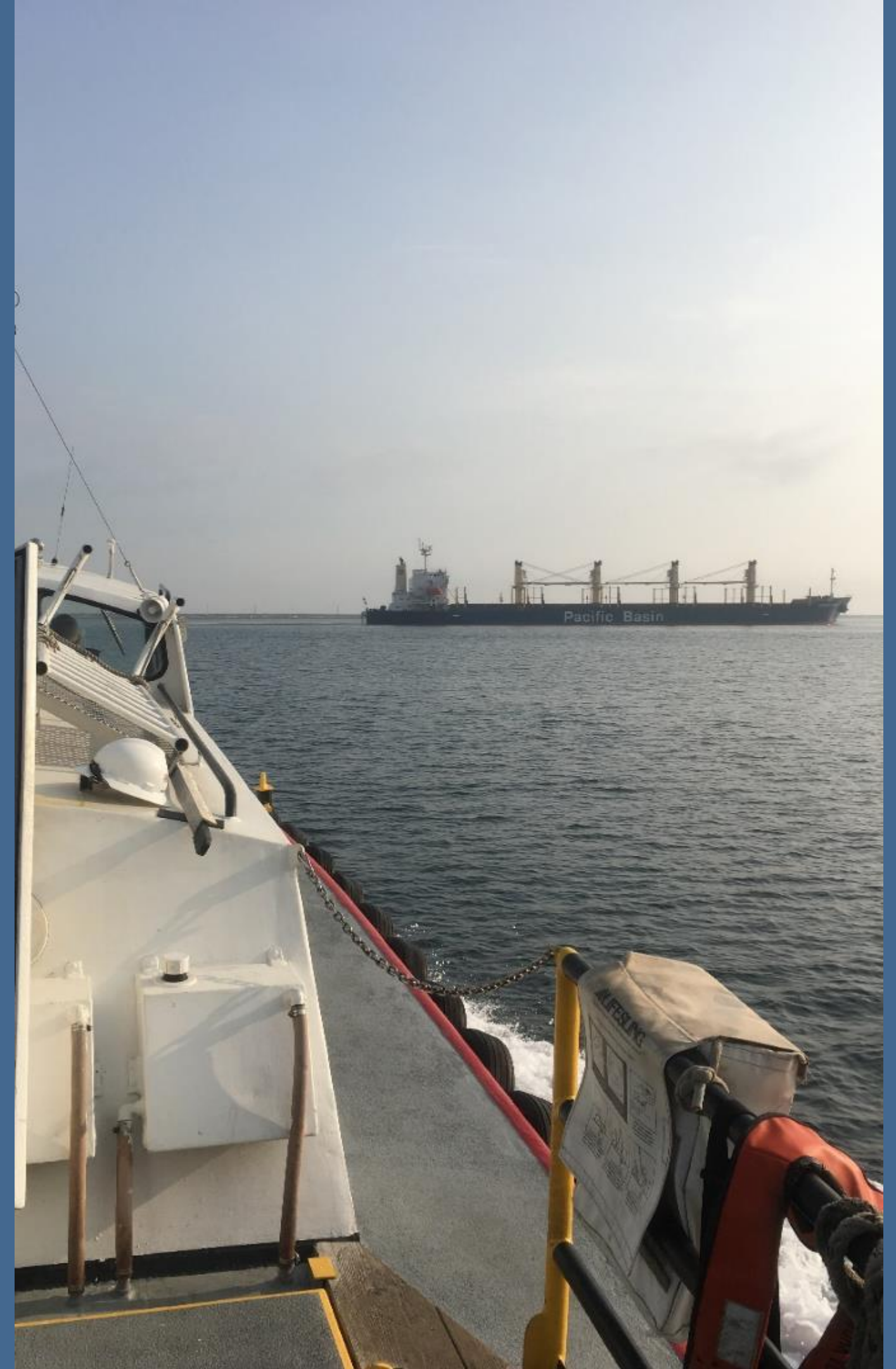
There will be a way to implement them down the road, **when demanded** by an analysis project

Starting outreach **early**, when little has been decided, can lead to **more participant requests** than are feasible to complete in the project timeline.



We gave ourselves **more time** to get more details in place.

We want to be responsive to the desire of stakeholders to **examine and vet the details** – not just the overall structure



Evaluation of **Tug Escorts** for Towed Oil Barges, Articulated Tug and Barges (ATBs), and Tankers under 40,000 DWT

Evaluation of an **Emergency Response Towing Vessel** Serving Haro/Boundary and Waters of the San Juan Islands

Contact: jd.leahy@ecy.wa.gov

