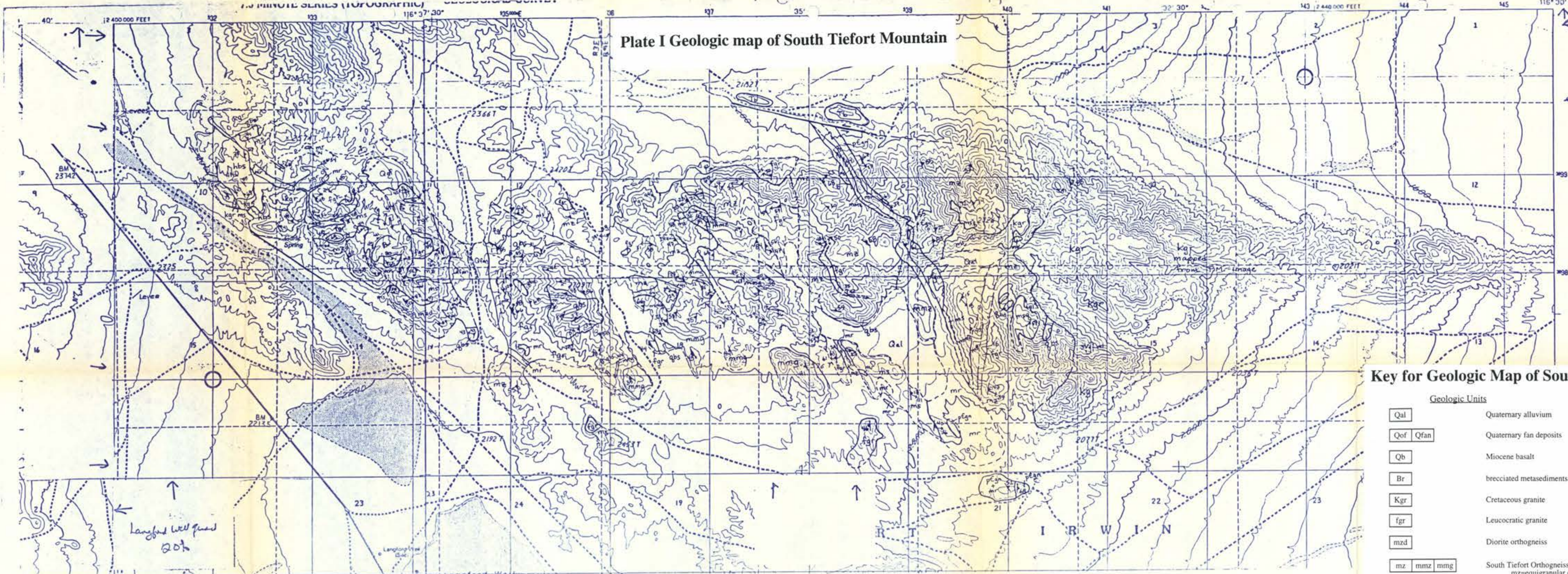


Plate I Geologic map of South Tiefert Mountain



Key for Geologic Map of South Tiefert Mountain

Geologic Units

Qal	Quaternary alluvium
Qof Qfan	Quaternary fan deposits
Qb	Miocene basalt
Br	brecciated metasediments
Kgr	Cretaceous granite
fgr	Leucocratic granite
mzd	Diorite orthogneiss
mz mmz mmg	South Tiefert Orthogneiss mz=equigranular quartz monzogranite mmz=megacrystic quartz monzogranite mmg=megacrystic granite
mv	metavolcanic (Permian?)
msq hbs qbs	metasedimentary rocks msq=quartzite hbs=hornblende biotite schist qbs=quartz biotite schist
Amp	amphibolite
mr	marble
pC	augen gneiss

Geologic symbols

	felsic and mafic dikes (148 ± 14 Ma)		fault
	strike and dip of foliation		contact
	strike and dip of bedding		approximate contact
	lineation		inferred contact
	small scale fold axis		