

McGann, A., and B. Strecker. 2022. Zooplankton recovery from a whole-lake disturbance: Examining roles of abiotic factors, biotic interactions, and traits. *Ecosphere*.

### Appendix S3

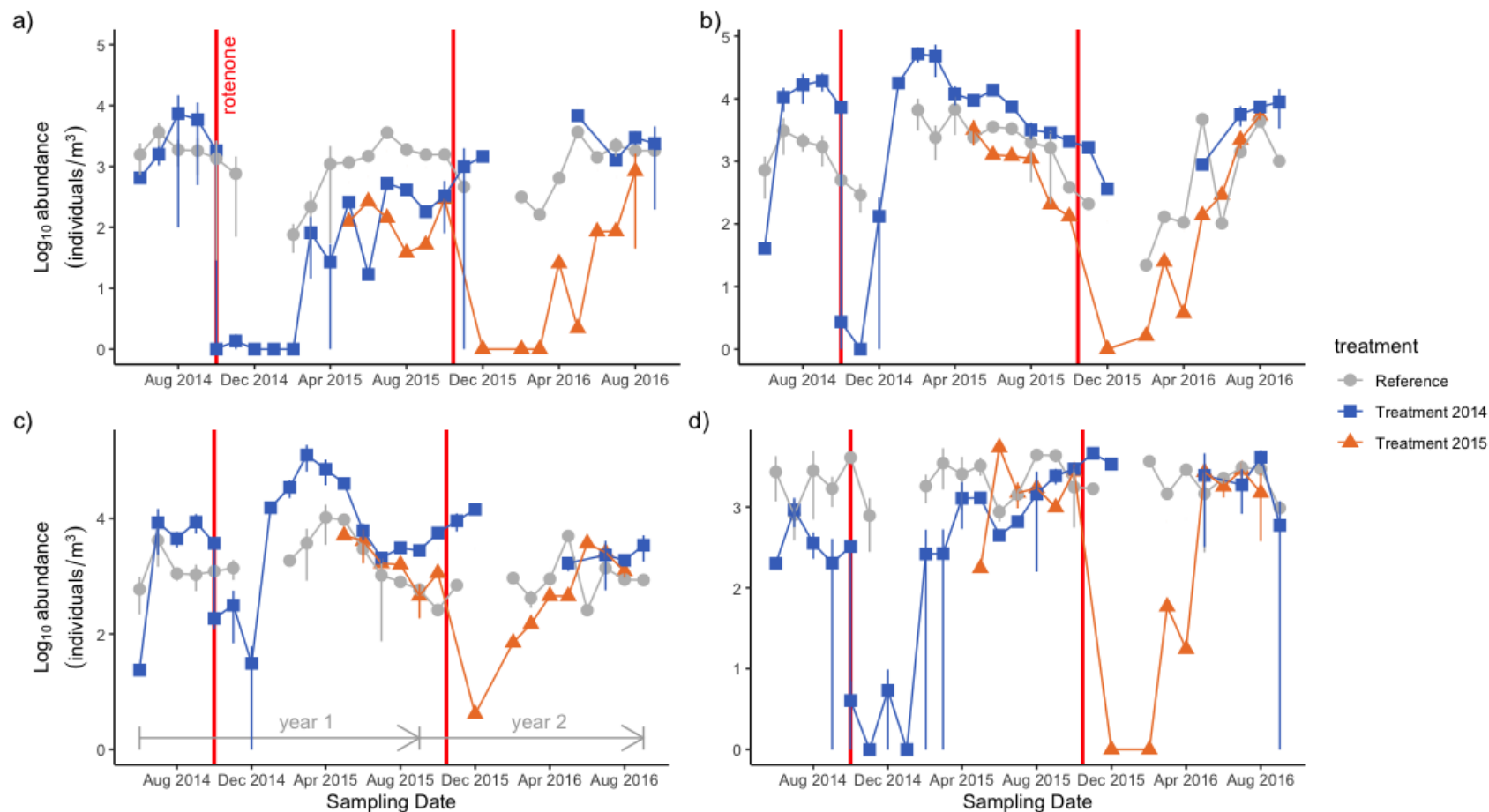
**Table S1:** Nutrient concentrations for reference and rotenone lakes during the study.

	Total phosphorus (µg/L)				Total nitrogen (µg/L)			
	2014	2015	2016	Average	2014	2015	2016	Average
<b>Reference</b>								
Amber	3	14	6	8	170	300	280	250
Bayley	17	63	20	33	570	770	710	683
Big Twin	12	12	11	12	760	670	870	767
Browns	12	21	11	15	750	830	820	800
Cedar	21	26	26	24	1200	1250	1200	1217
Dry Falls	17	16	18	17	1590	1220	1190	1333
Lost	5	8	8	7	470	560	650	560
<b>2014 Rotenone</b>								
Lower Hampton	6	17	11	11	330	430	650	470
McDowell	20	27	19	22	520	550	550	540
Upper Hampton	51	35	25	37	640	760	650	683
Widgeon	7	29	23	20	380	530	670	527
<b>2015 Rotenone</b>								
Badger	7	17	13	12	270	370	440	360
No Name	n/a	7	9	8	n/a	380	650	515
Rat	n/a	15	18	17	n/a	490	630	560

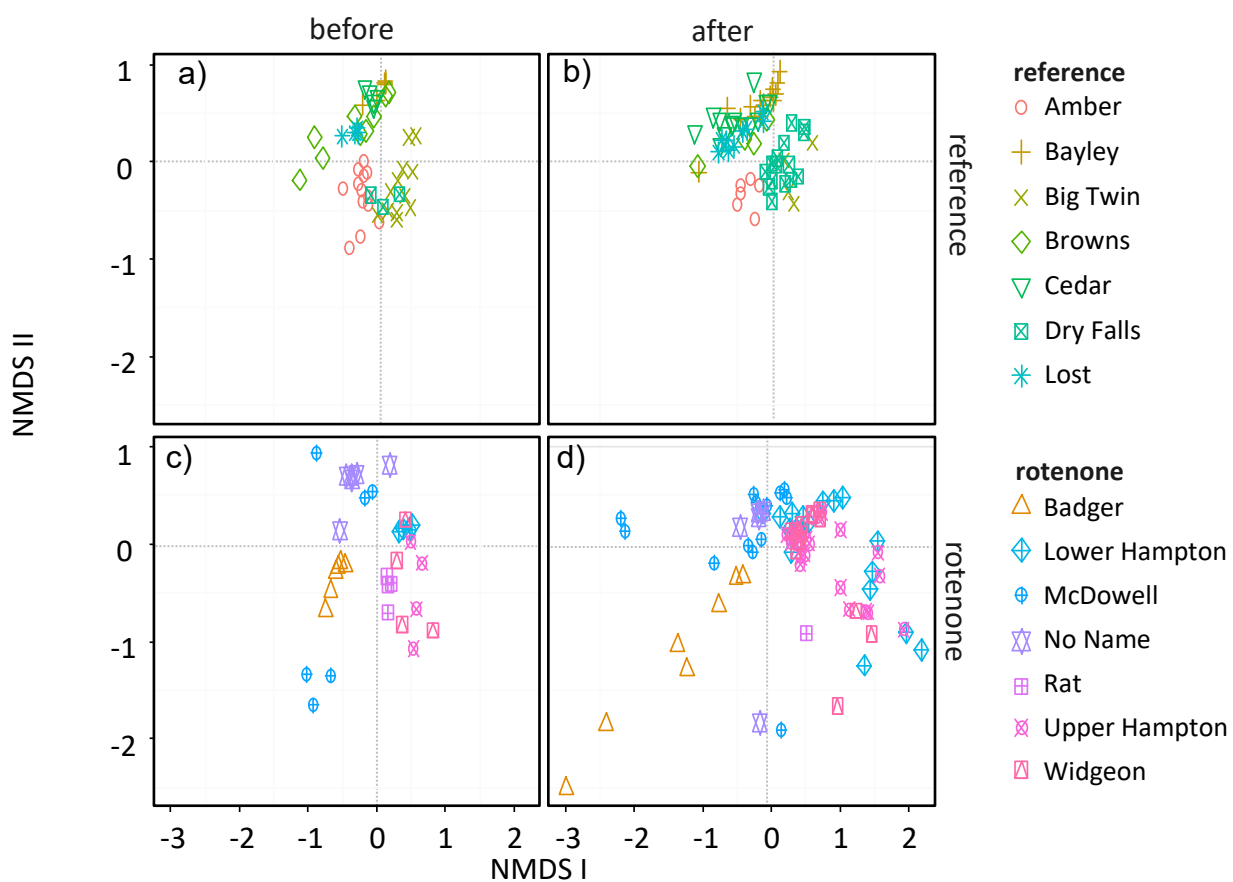
**Table S2:** Results of the linear mixed effects models for nutrients. Phosphorus was log<sub>10</sub>-transformed prior to analysis. Numerator degrees of freedom is 1 for all effects; denominator degrees of freedom (reported below) vary due to the use of the Satterthwaite approximation.

<b>Effect</b>	<b>Total Phosphorus</b>			<b>Total Nitrogen</b>		
	<i>df</i>	<i>t</i>	<i>p</i>	<i>df</i>	<i>t</i>	<i>p</i>
Treatment	16.6	0.690	0.500	13.2	-1.577	0.138
Period	20.0	-2.031	0.056†	20.2	-0.476	0.639
Treatment × Period	20.1	-0.113	0.911	20.2	-1.642	0.116

†  $p < 0.10$



**Figure S1.** Monthly averaged  $\log_{10}$  abundance of a) calanoid copepodids, b) copepod nauplii, c) cyclopoid copepodid, and juvenile cladocerans (individuals/ $\text{m}^3$ ) for reference, 2014 rotenone, and 2015 rotenone lakes. Error bars represent  $\pm 1$  standard error, red lines indicate date of treatment, and grey arrows represent study periods.



**Figure S2.** NMDS ordination of zooplankton communities contrasting reference lakes a) before and b) after, with rotenone lakes c) before and d) after. Each symbol represents a lake on a sampling date.